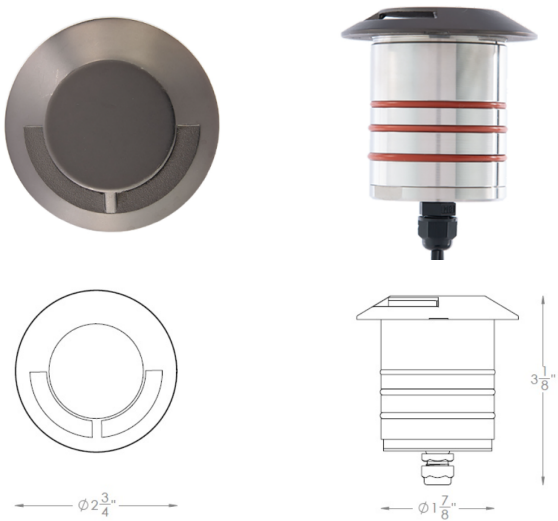


2" INGROUND SINGLE APERTURE
2091

WAC
LANDSCAPE LIGHTING



Fixture Type:

Catalog Number:

Project:

Location:

PRODUCT DESCRIPTION

Landscape 2" recessed inground luminaire washes walkways with a shadow-free smooth illumination.

FEATURES

- Factory sealed water tight fixtures
- Cold Weather Start: -40°C to 50°C
- Solid stainless steel construction
- Available Concrete Pour Adapter
- Spring clip, 6' lead wire and direct burial gel filled wire nuts included

SPECIFICATIONS

Input: 9 - 15VAC (Transformer is required)
Power: 4.1W / 6.6VA (Use VA value for sizing the transformer and calculate voltage drop.)
Brightness: 5 lm
Color Temp: 3000K
CRI: 85
Rated Life: 70,000 hours

ORDERING NUMBER

	Color Temp	Finish
2091	27 2700K	BS Bronzed Stainless Steel
	30 3000K	SS Stainless Steel

IEC safety Standard	Walk over	Drive over
Resistance to static load test	Yes (1125lbs)	Yes (4496lbs)
Resistance to torque and shear loads test	N/A	Yes

2091-30_____

Example: 2091-30SS

2" INGROUND SINGLE APERTURE

2091

WAC LANDSCAPE LIGHTING

Magnetic Transformers



*Stainless Steel, 12-15V output,
IP65 rated, UL 1838 listed
See transformer spec sheet for
details and its accessories*

9075-TRN-SS
75W Max

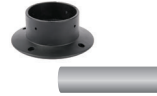
9150-TRN-SS
150W Max

9300-TRN-SS
300W Max

9600-TRN-SS
600W Max

2" Concrete Pour Kit

Order complete kit



2000-CON-PVC
Concrete Pour Kit

Order components separately



2000-PC-B
Concrete Pour Base



2000-PVC-P
Concrete Pour Pipe
Schedule 40 PVC

*For installation in concrete.
Use with a 4" outdoor rated junction box*

TESTED MAGNETIC LOW VOLTAGE (MLV) DIMMERS

Luminaire	Dimmer					
	Manufacturer	Family	Model	Power Rating	Range*	Note
2091	Lutron	Diva	DVLV-600	600W	20% - 100%	
		Skylark	SLV-600P	600W	15% - 100%	Best performance
		Skylark	S-10P	1000W		Not recommended

*Low end of this range is determined by output current which may not directly translate to the perceived light output

WAC Lighting fixtures are compatible with a variety of dimmers. For your convenience we have included a compatibility chart showing dimmers which have been tested with our products. The recommended list below is based upon testing conducted in a lab, and the results can vary in certain field applications due to a number of factors. Exclusion from the list does not imply incompatibility, just that it has not been tested by WAC Lighting. Please reference the dimmer manufacturer's instructions for installation, or contact a WAC lighting professional at 800-526-2588.

wacighting.com
Phone (800) 526.2588
Fax (800) 526.2585

Headquarters, East Manufacturing Facility
44 Harbor Park Drive
Port Washington, NY 11050

South East Manufacturing Facility
1600 Distribution Ct
Lithia Springs, GA 30122

Central Manufacturing Facility
1700 South J Elmer Freeway, Ste 100
Cedar Hill, TX 75104

West Manufacturing Facility
1750 S Archibald Ave
Ontario, CA 91761