

RECTANGLE STEP LIGHTS 12V
4021

WAC
LANDSCAPE LIGHTING

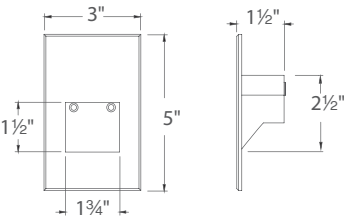


Fixture Type:

Catalog Number:

Project:

Location:



PRODUCT DESCRIPTION

Vertical rectangle step light designed for safety and style on stairways, patios, decks, balcony areas, walkways and building perimeters.

Features an architectural design. Energy efficient for long-lasting outdoor lighting solutions. Creates an attractive, romantic impression at night.

FEATURES

- Solid die-cast brass, corrosion resistant aluminum alloy, or cast stainless steel construction
- IP66 Rated, protected against high-pressure water jets
- Conveniently adapts into existing 12V system
- Invisible hardware
- Maintains constant lumen output against voltage drop
- UL 1838 listed

SPECIFICATIONS

- Input:** 9-15VAC (transformer is required)
- Power:** 2W / 3.1VA (Use VA value for sizing the transformer and calculate voltage drop.)
- CRI:** 90
- Mounting:** Fits into 2" x 4" J-Box with minimum inside dimensions of 3"L x 2"W x 2"H Includes bracket for J-Box mount
- Rated Life:** 60,000 hours

ORDERING NUMBER

		Color Temp	CRI	Finish	Lumens
4021	12V	27	2700K	90	BK Black on Aluminum 17
					BZ Bronze on Aluminum 17
					WT White on Aluminum 38
		30	3000K	90	23
					BK Black on Aluminum 17
					BZ Bronze on Aluminum 17
					WT White on Aluminum 38
					SS Cast Stainless Steel 23
		AM	Amber	-	BBR Bronze on Brass 11
					BK Black on Aluminum 11
					BZ Bronze on Aluminum 11
					WT White on Aluminum 23
					SS Cast Stainless Steel 14

4021-
Example: 4021-30BK

RECTANGLE STEP LIGHTS 12V

4021

WAC
LANDSCAPE LIGHTING

Magnetic Transformers

Stainless Steel, 12-15V output, IP65 Rated, UL 1838 listed
See transformer spec sheet for details and accessories

9075-TRN-SS
75W Max

9150-TRN-SS
150W Max

9300-TRN-SS
300W Max

9600-TRN-SS
600W Max



TESTED MAGNETIC LOW VOLTAGE (MLV) DIMMERS

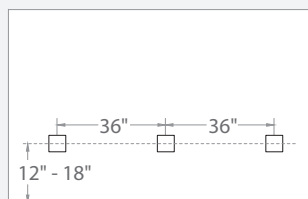
Luminaire	Dimmer					
	Manufacturer	Family	Model	Power Rating	Range*	Note
4021	Lutron	Diva	DVLV-600	600W	23% - 100%	
		Skylark	SLV-600P	600W	17% - 100%	Best performance
		Skylark	S-10P	1000W		Not recommended

*Low end of this range is determined by output current which may not directly translate to the perceived light output.

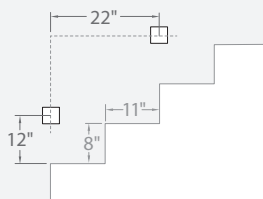
WAC Lighting fixtures are compatible with a variety of dimmers. For your convenience we have included a compatibility chart showing dimmers which have been tested with our products. The recommended list below is based upon testing conducted in a lab, and the results can vary in certain field applications due to a number of factors. Exclusion from the list does not imply incompatibility, just that it has not been tested by WAC Lighting. Please reference the dimmer manufacturer's instructions for installation, or contact a WAC lighting professional at 800-526-2588.

Spacing Recommendations for Optimal Light Distribution

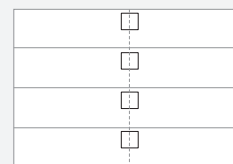
Corridors / Hallways



Stairs - Wall Mount



Stairs - Step Mount



Mount in center of stair as close to the upper tread as possible. For best results use one light per step for steps narrower than 5 feet

wacighting.com
Phone (800) 526.2588
Fax (800) 526.2585

Headquarters, East Manufacturing Facility
44 Harbor Park Drive
Port Washington, NY 11050

South East Manufacturing Facility
1600 Distribution Ct
Lithia Springs, GA 30122

Central Manufacturing Facility
1700 South J Elmer Freeway, Ste 100
Cedar Hill, TX 75104

West Manufacturing Facility
1750 S Archibald Ave
Ontario, CA 91761