

# WAC LIGHTING

## 3" Hardscape

### Quick Connect Linear Hardscape Light

Model & Size	Color Temp & CRI	Watt	Lumens	Finish
7032 3"	27 2700K - 85	1.5W	50	BK Black on Aluminum
	30 3000K - 85	1.5W	50	BZ Bronze on Aluminum GH Graphite on Aluminum SD Sand on Aluminum

Fixture Type: \_\_\_\_\_

Catalog Number: \_\_\_\_\_

Project: \_\_\_\_\_

Location: \_\_\_\_\_

Example: **7032-27BK**

#### DESCRIPTION

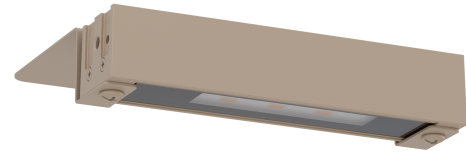
Hardscape luminaire with a unique, Quick Release light engine for easy servicing. Multiple mounting options with durable stainless steel construction.

#### FEATURES

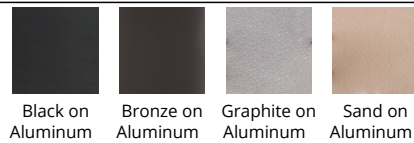
- Quick release connection at fixture to easily detach after installation
- Hardscape easily detaches from capstone bracket after installation
- Factory-sealed water tight fixture
- Use VA value for sizing the transformer and calculate voltage drop
- Transformer required
- 10 yrs warranty

#### SPECIFICATIONS

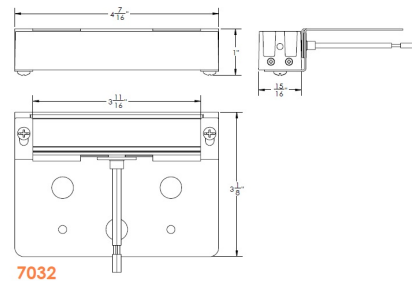
<b>Construction</b>	Corrosion resistant aluminum alloy
<b>Power:</b>	1.5W
<b>Input:</b>	9-15 VAC, 50/60Hz
<b>Light Source:</b>	Integrated LED, 3 Step Mac Adam Ellipse
<b>Lens:</b>	PC Diffuser
<b>Rated Life:</b>	50,000 Hours
<b>Mounting:</b>	Can be mounted on wall in all orientations
<b>Finish:</b>	Enamel Coated Sand on Aluminum, Enamel Coated Graphite on Aluminum, Enamel Coated Bronze on Aluminum, Enamel Coated Black on Aluminum
<b>Operating Temp:</b>	-40°F to 122°F (-40°C to 50°C)
<b>Standards:</b>	ETL, cETL, Wet Location Listed, IP66



#### FINISHES:



#### LINE DRAWING



# WAC LIGHTING

## 12V Magnetic Transformer (Outdoor)

### Accessory

#### Model & Product

9075-TRN-SS 75W Magnetic Landscape Lighting Power Supply in Stainless Steel  
 9150-TRN-SS 150W Magnetic Landscape Lighting Power Supply in Stainless Steel  
 9300-TRN-SS 300W Magnetic Landscape Lighting Power Supply in Stainless Steel  
 9600-TRN-SS 600W Magnetic Landscape Lighting Power Supply in Stainless Steel

#### L x W x H

13.97IN x 5.35IN x 5.63IN  
 18.9IN x 6.69IN x 6.3IN  
 18.9IN x 6.69IN x 6.3IN  
 14.49IN x 10.08IN x 5.94IN

Example: **9075-TRN-SS**

### DESCRIPTION

WAC Landscape Lighting Magnetic power supplies are 12V AC to support the entire line of 12V Landscape Lighting products, including Accent, Flood, Well, Indicator, Submersible, 12V Tape Light, Step and Wall, Deck and Patio, Path and Area, and Hardscape lighting products. The Stainless Steel housing enhances protection from corrosive and outdoor elements. Mounting extrusion with varying knockout sizes proved for a simple installation. Heavy gauged grounded and water resistant cord included for simple plug-in power feature. Hinged cover includes a loop to safely lock the power supply with an optional lock to secure access from inner contents. Multiple wire taps ranging from 12V-16V on terminal strip, for long runs where voltage drop may occur. Hinged cover includes a loop to safely lock the power supply with an optional lock to secure access from inner contents.

### FEATURES

- Outdoor rated stainless steel transformer contains an outdoor rated 3-prong plug for power
- Knock outs for power and photosensor connections
- 3-prong outlet for timer
- Taps for 12V, 13V, 14V and 15V
- 6' lead input wire, except for the 600W which comes with a 5' lead wire
- UL 1838 Listed
- MLV Dimming capable, dimming dependent upon fixture type
- 5 year warranty

### SPECIFICATIONS

<b>Construction</b>	Stainless steel
<b>Input:</b>	120 VAC, 50/60Hz
<b>Finish:</b>	Stainless Steel Stainless Steel
<b>Operating Temp:</b>	-40°F to 122°F (-40°C to 50°C)
<b>Standards:</b>	UL, cUL, Wet Location Listed, IP65

Fixture Type:

Catalog Number:

Project:

Location:



### FINISHES:



Stainless Steel

### LINE DRAWING

