

ENDURANCE STEP LIGHT

WL-LED200



Fixture Type:

Catalog Number:

Project:

Location:

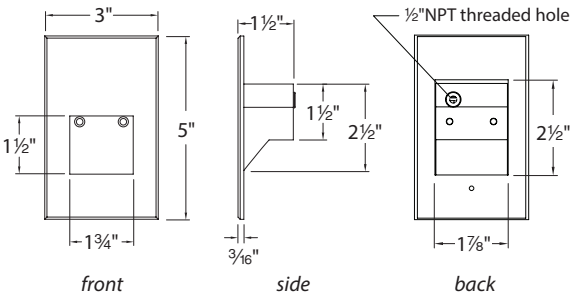
PRODUCT DESCRIPTION

With a sleek profile and no visible hardware, Endurance Step and Wall Lights are designed to seamlessly blend into any architectural environment. These luminaires deliver enhanced energy efficiency and optimized light output to effectively illuminate stairs, walls, and walkways with little to no glare.

Suitable for both indoor and outdoor applications, the factory-sealed IP67 light engine allows the fixture to withstand harsh outdoor environments.

FEATURES

- Direct wiring, no driver needed
- Low profile, flush to wall aesthetics with no visible hardware
- IP67 rated fully potted/sealed light engine
- 54,000 hour rated life
- Balanced lighting, free of shadows with minimum glare



SPECIFICATIONS

- Construction:** Die-cast aluminum, or 316 marine grade cast stainless steel
- Power:** Direct wiring, no remote driver needed.
Input voltage: 120V 50/60Hz
- Light Source:** Integrated LED Module, CRI 90+
Optional color lenses. Total power consumption of 3.5W
- Mounting:** Fits into 2" x 4" J-Box with minimum inside dimensions of 3"L x 2"W x 2"H
Includes bracket for J-Box mount.
- Dimming:** 100-10% ELV
- Operating Temperature:** -40°F to +122°F (-40°C to +50°C)
- Standards:** IP67, ETL & cETL Listed for wet locations
Title 24 JA8-2016 Compliant.

ORDER NUMBER

120V	Color Temperature			Lumens	Finish
WL-LED200 120V	27	Warm	2700K	65	BK Black on Aluminum
	30	White	3000K		BN* Brushed Nickel on Aluminum
	AM	Amber	610nm		BZ Bronze on Aluminum
	RD	Red	640nm		GH Graphite on Aluminum
	BL	Blue	450nm		SS Stainless Steel
					WT White on Aluminum

*Brushed Nickel Finish is for interior use only

Example: WL-LED200-30-SS

wacighting.com	Headquarters, East Manufacturing Facility	South East Manufacturing Facility	Central Manufacturing Facility	West Manufacturing Facility
Phone (800) 526.2588	44 Harbor Park Drive	1600 Distribution Ct	1700 South J Elmer Freeway, Ste 100	1750 S Archibald Ave
Fax (800) 526.2585	Port Washington, NY 11050	Lithia Springs, GA 30122	Cedar Hill, TX 75104	Ontario, CA 91761