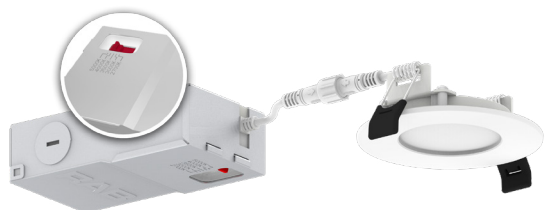


# 3" Round, CCT-Adjustable WFRL Edge-Lit Wafer



Smooth

Baffle



PROJECT:

DATE:

TYPE:

PREPARED BY:



3", Smooth & Baffle, CCT Adjustable, 120V, Triac Dimmable



## KEY FEATURES

- Round, slim, canless downlights
- Smooth, baffle, and shallow baffle trims
- 5 Selectable CCTs (2700/3000/3500/4000/5000K)
- 120V TRIAC dimmable driver down to 10%
- IC Rated, air tight, wet location and Energy Star

## PERFORMANCE

Catalog Number	Size	Trim	Equivalency	Input Wattage	Lumens	Efficacy	Color Temperature	L70 Lifetime
WFRL3R69CCT120WB	3"	Baffle	40W Incandescent	6W	500 lm	83 lm/W	Field-Adjustable 2700/3000/3500/4000/5000K	50,000 hrs
WFRL3R69CCT120WS		Smooth	40W Incandescent	6W	500 lm	83 lm/W		

## PHOTOMETRIC

Catalog Number	Wattage	CCT	Efficacy	Lumens
WFRL3R69CCT120WS	6W	2700K	75 lm/W	451 lm
		3000K	87 lm/W	524 lm
		3500K	90 lm/W	539 lm
		4000K	91 lm/W	548 lm
		5000K	91 lm/W	548 lm
WFRL3R69CCT120WB	6W	2700K	83 lm/W	498 lm
		3000K	87 lm/W	520 lm
		3500K	89 lm/W	537 lm
		4000K	91 lm/W	544 lm
		5000K	91 lm/W	546 lm

# 3" Round, CCT-Adjustable WFRL Edge-Lit Wafer



## TECHNICAL SPECIFICATIONS

### MODULE CONSTRUCTION

**Product Type**

Slim canless wafer downlights

**Size**

3"

**Shape**

Round

**Trim Style**

Smooth or baffle

**Enclosure Material**

Dead front (non-metallic) trim for corrosive environments. Aluminum back plate for effective heat dissipation

**Finish**

White

**Lens Finish**

Polycarbonate

### REMOTE DRIVER CONSTRUCTION

**Remote Driver/Junction Box**

Die-formed metal driver / junction box with captive hinged junction box cover. Listed for maximum of (4) 12AWG through branch circuit conductor suitable for 90° C permitted in box. Easy to wire in 2in/2out (plus ground) applications. (4) conduit pry-outs. (3) quick snap-in connectors for quick and reliable line voltage connections. Integral mounting facilitates direct mounting to building structure or mounting frame.

**Mounting**

No housing is required, two tension steel spring clips secure luminaire to ceiling. Accommodates ceiling thickness up to 15/16". New construction frames are available.

**Cable**

FT5 Plenum Rated Cable (*per UL2043*)

### LED CHARACTERISTICS

**Beam Angle**

110°

**Color Temperature**

Field adjustable via dip switch 2700/3000/3500/4000/5000K

**Color Accuracy (CRI)**

90+ CRI

**R9 Value**

High color performance with R9 greater than 50

**Color Consistency**

<4-step (2700K & 5000K) MacAdam Ellipse binning to achieve consistent fixture-to-fixture color

**Color Stability**

LED color temperature is warranted to shift no more than 200K in color temperature over a 5-year period

**Color Uniformity**

RAB's range of Correlated Color Temperature follows the guidelines of the American National Standard for Specifications for the Chromaticity of Solid State Lighting (SSL) Products, ANSI C78.377-2017.

### OTHER

**Warranty**

RAB warrants that our LED products will be free from defects in materials and workmanship for a period of five (5) years from the date of delivery to the end user, including coverage of light output, color stability, driver performance and fixture finish. RAB's warranty is subject to all terms and conditions found at [rablighting.com/warranty](http://rablighting.com/warranty).

### ELECTRICAL

**Dimmable**

Yes, dimmable down to 10% on compatible TRIAC/ELV dimming systems. See Dimmer Compatibility List.

**Driver**

Constant Current, Class 2 60 Hz; 120V: 54 mA

**Power Factor**

≥0.9

**Input Voltage**

120V

**Operating Frequency**

60Hz

**Operating Temperature**

-4°F to 104°F (-20°C to 40°C)

**THD**

≤20%

### COMPLIANCE

**Listings**

UL Listed

**Environment**

Suitable for use indoors and outdoors in dry, damp, or wet environments.

**IC Rated**

Suitable for direct contact with insulation.

Type IC inherently protected, suitable for direct contact to air permeable insulation and cULus listed for damp locations. Not for use in direct contact with spray foam insulation, consult NEMA LSD57-2013.

**Air Tight**

Housing certified Air Tight as per ASTM E283

**Energy Star Approved**

This product is ENERGY STAR® Certified.

**California Title 24 JA8 Compliant**

Can be used to conform with the requirements of California Title 24 Part 6.

**California Energy Commission (CEC) Status**

Lawful for Sales in California

**NEC Compliant**

Suitable for use in closets. Compliant with NEC Sec. 410.16 (A)(1) and 410.16 (C3).

**IESNA LM-79 & LM80 Testing**

RAB LED luminaires and LED components have been tested by an independent laboratory in accordance with IESNA LM-79 and LM-80.

**FCC**

Complies with Part 15 of the FCC Rules.

**RoHS**

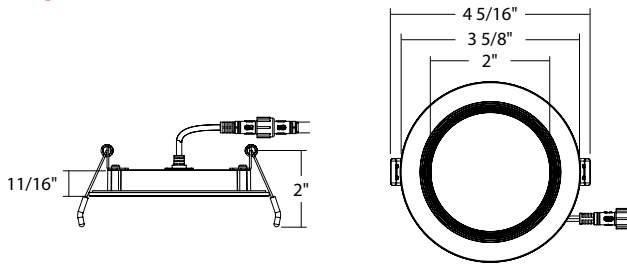
Mercury and UV free. RoHS-compliant components.

# 3" Round, CCT-Adjustable WFRL Edge-Lit Wafer

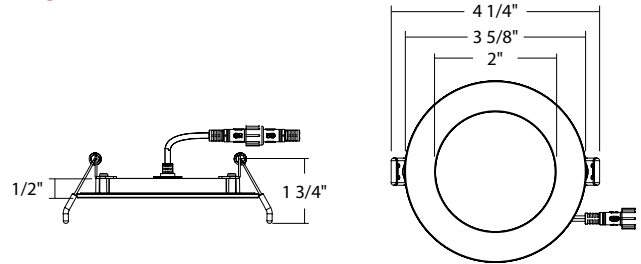


## DIMENSIONS

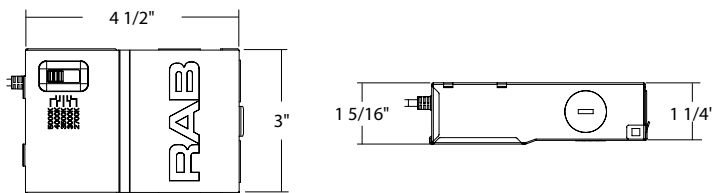
Baffle, Round  
Weight: 0.68 lb



Smooth, Round  
Weight: 0.70 lb



Driver/Junction Box



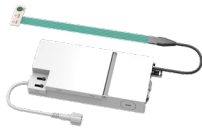
## ACCESSORIES

Emergency Driver



DRI-25-EMGR-DC

DRI-21-EMGR-DC-D10



DRI-EMB-15S-LV

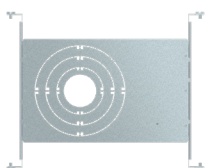
Catalog Number	UPC	Description
DRI-25-EMGR-DC	19813519180	Emergency driver 100-277V 25W
DRI-21-EMGR-DC-D10	192552028264	Emergency driver 100-277V 21W 0-10V T20
DRI-EMB-15S-LV	192552045650	Emergency backup driver

Extension Cables



Catalog Number	UPC	Description
EXTCBL-FA-6	019813908502	6' Extension Cable for Wafer FA
EXTCBL-FA-12	019813908519	12' Extension Cable for Wafer FA
EXTCBL-FA-20	019813908526	20' Extension Cable for Wafer FA

Mounting Plates



DLPLATE/WFR3468/NB



DLPLATE/WFR3456

Catalog Number	UPC	Description
DLPLATE/WFR3468/NB	192552000673	Mounting plate for 3", 4", 6", 8" with nailer bar
DLPLATE/WFR3456	192552025584	Mounting plate for 3", 4", 5", 6" Wafer

3" Round, CCT-Adjustable WFRL Edge-Lit Wafer

RAB

ORDERING INFO			
Catelog Number	Model Number	UPC	Case Pack
WFRL3R69CCT120WB	DLW0084(WFRL3R69CCT120WB)	192552018753	6
WFRL3R69CCT120WS	DLW0059(WFRL3R69CCT120WS)	192552013390	4

ORDERING MATRIX														
Family	Size		Shape	Wattage		CRI/Color Temp		Driver		Finish		Trim		
WFRL	3		R	6		9CCT		120		W				
	3	3"	R	Round	6	6W	9CCT	90CRI; 2700/3000/3500/4000/5000K		120	120V; TRIAC/ELV	W	White	S B Smooth Baffle

# 4" Round, CCT-Adjustable WFRL Edge-Lit Wafer



PROJECT:

DATE:

TYPE:

PREPARED BY:



## KEY FEATURES

- Round, slim, canless downlights
- Smooth, baffle, and shallow baffle trims
- Available in black or white (*color trim accessories offered in Black Bronze, Brushed Nickel*)
- 5 Selectable CCTs (2700/3000/3500/4000/5000K)
- 120V TRIAC dimmable driver down to 10%
- IC Rated, air tight, wet location and Energy Star

4", Smooth & Baffle, CCT Adjustable, 120V, Triac Dimmable



## PERFORMANCE

Catalog Number	Color	Trim	Input Wattage	Lumens	Efficacy	Equivalency	Color Temperature	L70 Lifetime
WFRL4R99FA120BS	Black	Smooth	9W	800 lm	87 lm/W	60W Incandescent	Field-Adjustable 2700/3000/3500/4000/5000K	50,000 hrs
WFRL4R99FA120BB		Baffle	9W	800 lm	87 lm/W			
WFRL4R99FA120WB	White	Baffle	9W	750 lm	83 lm/W			
WFRL4R99FA120WBS		Shallow Baffle	9W	750 lm	83 lm/W			
WFRL4R99FA120WS		Smooth	9W	750 lm	83 lm/W			
WFRL4R10.59FA120WB	White	Baffle	10.5W	1000 lm	83 lm/W			
WFRL4R10.59FA120WS		Smooth	10.5W	1000 lm	83 lm/W			

# 4" Round, CCT-Adjustable WFRL Edge-Lit Wafer



## PHOTOMETRIC

Catalog Number	Wattage	CCT	Efficacy	Lumens
WFRL4R99FA120BS	9W	2700K	80 lm/W	715 lm
		3000K	84 lm/W	745 lm
		3500K	90 lm/W	781 lm
		4000K	91 lm/W	799 lm
		5000K	90 lm/W	802 lm
WFRL4R99FA120BB	9W	2700K	80 lm/W	718 lm
		3000K	84 lm/W	749 lm
		3500K	90 lm/W	786 lm
		4000K	91 lm/W	804 lm
		5000K	90 lm/W	807 lm
WFRL4R99FA120WS	9W	2700K	77 lm/W	696 lm
		3000K	81 lm/W	725 lm
		3500K	82 lm/W	735 lm
		4000K	87 lm/W	780 lm
		5000K	84 lm/W	760 lm
WFRL4R99FA120WBS	9W	2700K	78 lm/W	698 lm
		3000K	81 lm/W	728 lm
		3500K	82 lm/W	737 lm
		4000K	87 lm/W	785 lm
		5000K	85 lm/W	763 lm
WFRL4R99FA120WB	9W	2700K	78 lm/W	700 lm
		3000K	81 lm/W	729 lm
		3500K	82 lm/W	740 lm
		4000K	87 lm/W	786 lm
		5000K	85 lm/W	765 lm
WFRL4R10.59FA120WS	10.5W	2700K	87 lm/W	916 lm
		3000K	91 lm/W	960 lm
		3500K	96 lm/W	1,007 lm
		4000K	97 lm/W	1,020 lm
		5000K	95 lm/W	995 lm
WFRL4R10.59FA120WB	10.5W	2700K	86 lm/W	906 lm
		3000K	90 lm/W	950 lm
		3500K	95 lm/W	997 lm
		4000K	96 lm/W	1,010 lm
		5000K	94 lm/W	985 lm

# 4" Round, CCT-Adjustable WFRL Edge-Lit Wafer



## TECHNICAL SPECIFICATIONS

### MODULE CONSTRUCTION

**Product Type**

Slim canless wafer downlights

**Size**

4"

**Shape**

Round

**Trim Style**

Smooth or baffle

**Enclosure Material**

Dead front (non-metallic) trim for corrosive environments. Aluminum back plate for effective heat dissipation

**Finish**

White or black

**Lens Finish**

Polycarbonate

### REMOTE DRIVER CONSTRUCTION

**Remote Driver/Junction Box**

Die-formed metal driver / junction box with captive hinged junction box cover. Listed for maximum of (4) 12AWG through branch circuit conductor suitable for 90° C permitted in box. Easy to wire in 2in/2out (plus ground) applications. (4) conduit pry-outs. (3) quick snap-in connectors for quick and reliable line voltage connections. Integral mounting facilitates direct mounting to building structure or mounting frame.

**Mounting**

No housing is required, two tension steel spring clips secure luminaire to ceiling. Accommodates ceiling thickness up to 15/16". New construction frames are available.

**Cable**

FT5 Plenum Rated Cable (*per UL2043*)

### LED CHARACTERISTICS

**Beam Angle**

110°

**Color Temperature**

Field adjustable via dip switch 2700/3000/3500/4000/5000K

**Color Accuracy (CRI)**

90+ CRI

**R9 Value**

High color performance with R9 greater than 50

**Color Consistency**

<4-step (2700K & 5000K) MacAdam Ellipse binning to achieve consistent fixture-to-fixture color

**Color Stability**

LED color temperature is warranted to shift no more than 200K in color temperature over a 5-year period

**Color Uniformity**

RAB's range of Correlated Color Temperature follows the guidelines of the American National Standard for Specifications for the Chromaticity of Solid State Lighting (SSL) Products, ANSI C78.377-2017.

### OTHER

**Warranty**

RAB warrants that our LED products will be free from defects in materials and workmanship for a period of five (5) years from the date of delivery to the end user, including coverage of light output, color stability, driver performance and fixture finish. RAB's warranty is subject to all terms and conditions found at [rablighting.com/warranty](http://rablighting.com/warranty).

### ELECTRICAL

**Dimmable**

Yes, dimmable down to 10% on compatible TRIAC/ELV dimming systems. See Dimmer Compatibility List.

**Driver**

Constant Current, Class 2 60 Hz; 120V: 54 mA

**Power Factor**

≥0.9

**Input Voltage**

120V

**Operating Frequency**

60Hz

**Operating Temperature**

-4°F to 104°F (-20°C to 40°C)

**THD**

≤20%

### COMPLIANCE

**Listings**

UL Listed

**Environment**

Suitable for use indoors and outdoors in dry, damp, or wet environments.

**IC Rated**

Suitable for direct contact with insulation.

Type IC inherently protected, suitable for direct contact to air permeable insulation and cULus listed for damp locations. Not for use in direct contact with spray foam insulation, consult NEMA LSD57-2013.

**Air Tight**

Housing certified Air Tight as per ASTM E283

**Energy Star Approved**

This product is ENERGY STAR® Certified.

**California Title 24 JA8 Compliant**

Can be used to conform with the requirements of California Title 24 Part 6.

**California Energy Commission (CEC) Status**

Lawful for Sales in California

**NEC Compliant**

Suitable for use in closets. Compliant with NEC Sec. 410.16 (A)(1) and 410.16 (C3).

**IESNA LM-79 & LM80 Testing**

RAB LED luminaires and LED components have been tested by an independent laboratory in accordance with IESNA LM-79 and LM-80.

**FCC**

Complies with Part 15 of the FCC Rules.

**RoHS**

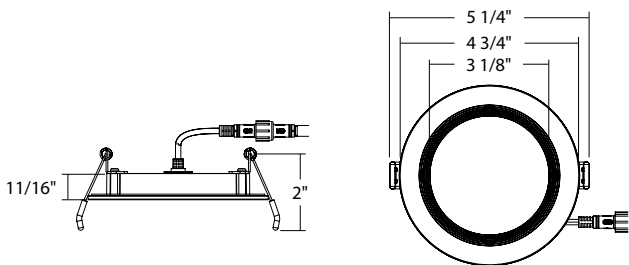
Mercury and UV free. RoHS-compliant components.

4" Round, CCT-Adjustable WFRL Edge-Lit Wafer

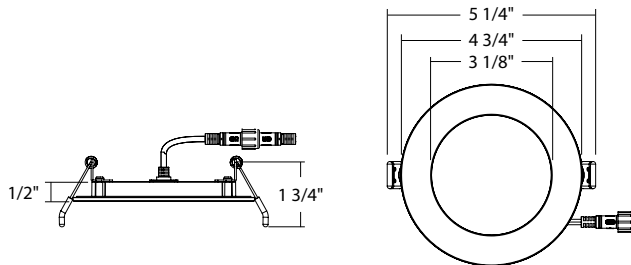
RAB

DIMENSIONS

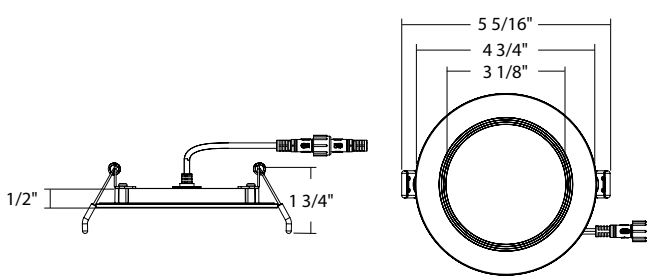
Baffle, Round



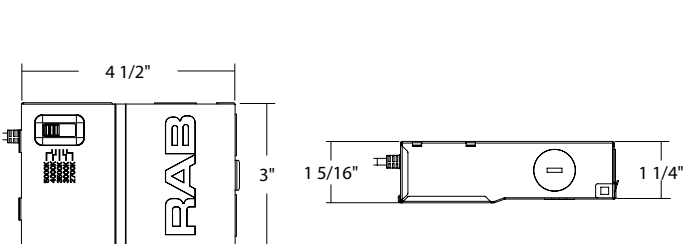
Smooth, Round



Shallow Baffle, Round

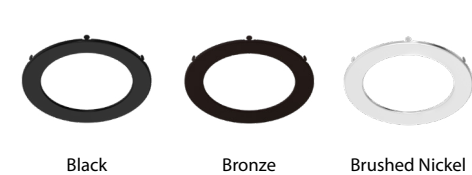


Driver/Junction Box



ACCESSORIES

Color Trim



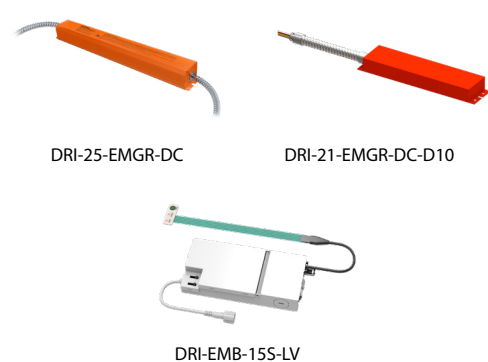
Catalog Number	UPC	Description
WFRL-TRIM-4R-BS	192552013659	4" Color trim round baffle black
WFRL-TRIM-4R-BRS	192552013666	4" Color trim round baffle bronze
WFRL-TRIM-4R-BNS	192552013673	4" Color trim round baffle brushed nickel

Goof Rings



Catalog Number	UPC	Description
WFRL-GOOF-4R-6R-W	192552013604	4"-6" Goof ring round white

Emergency Driver



Catalog Number	UPC	Description
DRI-25-EMGR-DC	19813519180	Emergency driver 100-277V 25W
DRI-21-EMGR-DC-D10	192552028264	Emergency driver 100-277V 21W 0-10V T20
DRI-EMB-155-LV	192552045650	Emergency backup driver



# 4" Round, CCT-Adjustable WFRL Edge-Lit Wafer



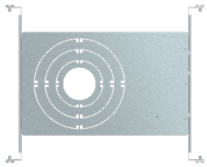
## ACCESSORIES (CONT'D)

### Extension Cables



Catalog Number	UPC	Description
EXTCBL-FA-6	019813908502	6' Extension Cable for Wafer FA
EXTCBL-FA-12	019813908519	12' Extension Cable for Wafer FA
EXTCBL-FA-20	019813908526	20' Extension Cable for Wafer FA

### Mounting Plates



DLPLATE/WFR3468/NB



DLPLATE/WFR3456



DLPLATE/WFR4/NB/CL



DLPLATE/WFR4

Catalog Number	UPC	Description
DLPLATE/WFR3468/NB	192552000673	Mounting plate for 3", 4", 6", 8" with nailer bar
DLPLATE/WFR3456	192552025584	Mounting plate for 3", 4", 5", 6" Wafer
DLPLATE/WFR4/NB/CL	0192552036993	Mounting plate for 4" wafer with nailer bar and drywall collar
DLPLATE/WFR4	192552039819	Mounting plate for 4" wafer

## ORDERING INFO

Catalog Number	Model Number	UPC	Case Pack
WFRL4R99FA120BS	DLW0128(WFRL4R99FA120BS)	192552047999	6
WFRL4R99FA120BB	DLW0129(WFRL4R99FA120BB)	192552048002	6
WFRL4R99FA120WB	DLW0054(WFRL4R99FA120WB)	19813682464	6
WFRL4R99FA120WBS	DLW0094(WFRL4R99FA120WBS)	192552024266	6
WFRL4R99FA120WS	DLW0053(WFRL4R99FA120WS)	19813682457	6
WFRL4R10.59FA120WB	DLW0075(WFRL4R10.59FA120WB)	192552013451	6
WFRL4R10.59FA120WS	DLW0074(WFRL4R10.59FA120WS)	192552013444	6

## ORDERING MATRIX

Family	Size	Shape	Wattage	CRI/Color Temp	Driver	Finish	Trim	Trim Depth
WFRL	4	R		9FA	120			
	4 4" R	Round	9 9W 10.5 10.5W	90CRI; 2700/3000/3500/4000/5000K	120 120V; TRIAC/ELV	W B White Black*	S B Smooth Baffle	Blank S Standard Shallow

\* Black finish only available on 4" 9W

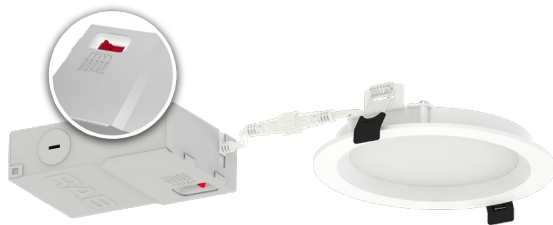
# 5" Round, CCT-Adjustable WFRL Edge-Lit Wafer

**RAB**



Smooth

Baffle



PROJECT:

DATE:

TYPE:

PREPARED BY:



## KEY FEATURES

- Round, slim, canless downlights
- Smooth, baffle, and shallow baffle trims
- 5 Selectable CCTs (2700/3000/3500/4000/5000K)
- 120V TRIAC dimmable driver down to 10%
- IC Rated, air tight, wet location and Energy Star

5", Smooth & Baffle, CCT Adjustable, 120V, Triac Dimmable



## PERFORMANCE

Catalog Number	Size	Trim	Equivalency	Input Wattage	Lumens	Efficacy	Color Temperature	L70 Lifetime
WFRL5R129CCT120WB	5"	Baffle	85W Incandescent	12W	1,100 lm	83 lm/W	Field-Adjustable 2700/3000/3500/4000/5000K	50,000 hrs
WFRL5R129CCT120WS		Smooth						

## PHOTOMETRIC

Catalog Number	Wattage	CCT	Efficacy	Lumens
WFRL5R129CCT120WB	12W	2700K	85 lm/W	1,017 lm
		3000K	88 lm/W	1,058 lm
		3500K	92 lm/W	1,107 lm
		4000K	94 lm/W	1,123 lm
		5000K	88 lm/W	1,051 lm
WFRL5R129CCT120WS	12W	2700K	85 lm/W	1,025 lm
		3000K	89 lm/W	1,067 lm
		3500K	93 lm/W	1,116 lm
		4000K	94 lm/W	1,132 lm
		5000K	89 lm/W	1,062 lm

# 5" Round, CCT-Adjustable WFRL Edge-Lit Wafer



## TECHNICAL SPECIFICATIONS

### MODULE CONSTRUCTION

**Product Type**

Slim canless wafer downlights

**Finish**

White

**Size**

5"

**Lens Finish**

Polycarbonate

**Shape**

Round

**Trim Style**

Smooth or baffle

**Enclosure Material**

Dead front (non-metallic) trim for corrosive environments. Aluminum back plate for effective heat dissipation

### REMOTE DRIVER CONSTRUCTION

**Remote Driver/Junction Box**

Die-formed metal driver / junction box with captive hinged junction box cover. Listed for maximum of (4) 12AWG through branch circuit conductor suitable for 90° C permitted in box. Easy to wire in 2in/2out (plus ground) applications. (4) conduit pry-outs. (3) quick snap-in connectors for quick and reliable line voltage connections. Integral mounting facilitates direct mounting to building structure or mounting frame.

**Mounting**

No housing is required, two tension steel spring clips secure luminaire to ceiling. Accommodates ceiling thickness up to 15/16". New construction frames are available.

**Cable**

FT5 Plenum Rated Cable (per UL2043)

### LED CHARACTERISTICS

**Beam Angle**

110°

**Color Temperature**

Field adjustable via dip switch 2700/3000/3500/4000/5000K

**Color Accuracy (CRI)**

90+ CRI

**R9 Value**

High color performance with R9 greater than 50

**Color Consistency**

<4-step (2700K & 5000K) MacAdam Ellipse binning to achieve consistent fixture-to-fixture color

**Color Stability**

LED color temperature is warranted to shift no more than 200K in color temperature over a 5-year period

**Color Uniformity**

RAB's range of Correlated Color Temperature follows the guidelines of the American National Standard for Specifications for the Chromaticity of Solid State Lighting (SSL) Products, ANSI C78.377-2017.

### OTHER

**Warranty**

RAB warrants that our LED products will be free from defects in materials and workmanship for a period of five (5) years from the date of delivery to the end user, including coverage of light output, color stability, driver performance and fixture finish. RAB's warranty is subject to all terms and conditions found at [rablighting.com/warranty](http://rablighting.com/warranty).

### ELECTRICAL

**Dimmable**

Yes, dimmable down to 10% on compatible TRIAC/ELV dimming systems. See Dimmer Compatibility List.

**Driver**

Constant Current, Class 2 60 Hz; 120V: 54 mA

**Power Factor**

≥0.9

**Input Voltage**

120V

**Operating Frequency**

60Hz

**Operating Temperature**

-4°F to 104°F (-20°C to 40°C)

**THD**

≤20%

### COMPLIANCE

**Listings**

UL Listed

**Environment**

Suitable for use indoors and outdoors in dry, damp, or wet environments.

**IC Rated**

Suitable for direct contact with insulation.

Type IC inherently protected, suitable for direct contact to air permeable insulation and cULus listed for damp locations. Not for use in direct contact with spray foam insulation, consult NEMA LSD57-2013.

**Air Tight**

Housing certified Air Tight as per ASTM E283

**Energy Star Approved**

This product is ENERGY STAR® Certified.

**California Title 24 JA8 Compliant**

Can be used to conform with the requirements of California Title 24 Part 6.

**California Energy Commission (CEC) Status**

Lawful for Sales in California

**NEC Compliant**

Suitable for use in closets. Compliant with NEC Sec. 410.16 (A)(1) and 410.16 (C3).

**IESNA LM-79 & LM80 Testing**

RAB LED luminaires and LED components have been tested by an independent laboratory in accordance with IESNA LM-79 and LM-80.

**FCC**

Complies with Part 15 of the FCC Rules.

**RoHS**

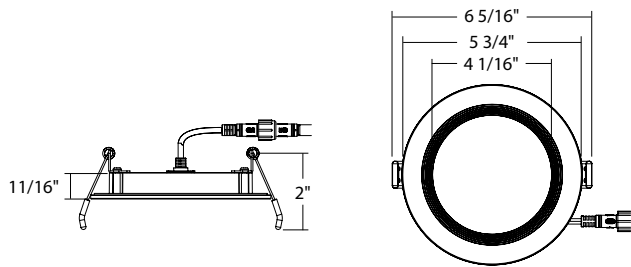
Mercury and UV free. RoHS-compliant components.

5" Round, CCT-Adjustable WFRL Edge-Lit Wafer

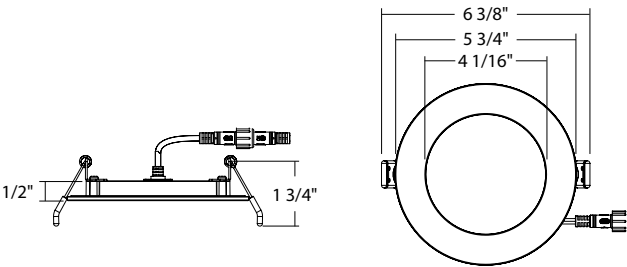
RAB

DIMENSIONS

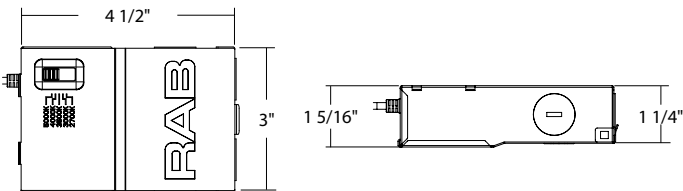
Baffle, Round



Smooth, Round

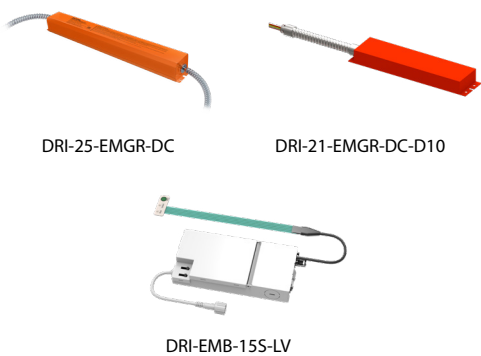


Driver/Junction Box



ACCESSORIES

Emergency Driver



Catalog Number	UPC	Description
DRI-25-EMGR-DC	19813519180	Emergency driver 100-277V 25W
DRI-21-EMGR-DC-D10	192552028264	Emergency driver 100-277V 21W 0-10V T20
DRI-EMB-15S-LV	192552045650	Emergency backup driver

Extension Cables



Catalog Number	UPC	Description
EXTCBL-FA-6	019813908502	6' Extension Cable for Wafer FA
EXTCBL-FA-12	019813908519	12' Extension Cable for Wafer FA
EXTCBL-FA-20	019813908526	20' Extension Cable for Wafer FA

Mounting Plates



Catalog Number	UPC	Description
DLPLATE/WFR3456	192552025584	Mounting plate for 3", 4", 5", 6" Wafer

5" Round, CCT-Adjustable WFRL Edge-Lit Wafer

RAB

ORDERING INFO			
Catelog Number	Model Number	UPC	Case Pack
WFRL5R129CCT120WB	DLW0093(WFRL5R129CCT120WB)	192552022316	6
WFRL5R129CCT120WS	DLW0092(WFRL5R129CCT120WS)	192552022309	6

ORDERING MATRIX																
Family		Size		Shape		Wattage		CRI/Color Temp			Driver		Finish		Trim	
WFRL		5		R		12		9CCT			120		W			
5	5"	R	Round	12	12W	9CCT	90CRI; 2700/3000/3500/4000/5000K			120	120V; TRIAC/ELV		W	White	S B	Smooth Baffle

# 6" Round, CCT-Adjustable WFRL Edge-Lit Wafer



PROJECT:

DATE:

TYPE:

PREPARED BY:



## KEY FEATURES

- Round, slim, canless downlights
- Smooth, baffle, and shallow baffle trims
- Available in black or white (*color trim accessories offered in Black Bronze, Brushed Nickel*)
- 5 Selectable CCTs (2700/3000/3500/4000/5000K)
- 120V TRIAC dimmable driver down to 10%
- IC Rated, air tight, wet location and Energy Star

6", Smooth & Baffle, CCT Adjustable, 120V, Triac Dimmable



## PERFORMANCE

Catalog Number	Color	Trim	Equivalency	Input Wattage	Lumens	Efficacy	Color Temperature	L70 Lifetime
WFRL6R139FA120BS	Black	Smooth	75W Incandescent	13W	1,100 lm	93 lm/W	Field-Adjustable 2700/3000/3500/4000/5000K	50,000 hrs
WFRL6R139FA120BB		Baffle	75W Incandescent	13W	1,100 lm	92 lm/W		
WFRL6R139FA120WB	White	Baffle	75W Incandescent	13W	1,100 lm	85 lm/W		
WFRL6R139FA120WS		Smooth	75W Incandescent	13W	1,100 lm	85 lm/W		
WFRL6R139FA120WBS		Shallow Baffle	75W Incandescent	13W	1,100 lm	85 lm/W		
WFRL6R149FA120WB		Baffle	100W Incandescent	14W	1,300 lm	82 lm/W		
WFRL6R149FA120WS		Smooth	100W Incandescent	14W	1,300 lm	86 lm/W		

# 6" Round, CCT-Adjustable WFRL Edge-Lit Wafer



## PHOTOMETRIC

Catalog Number	Wattage	CCT	Efficacy	Lumens
WFRL6R139FA120BS	13W	2700K	87 lm/W	1,064 lm
		3000K	90 lm/W	1,099 lm
		3500K	95 lm/W	1,154 lm
		4000K	98 lm/W	1,181 lm
		5000K	96 lm/W	1,182 lm
WFRL6R139FA120BB	13W	2700K	86 lm/W	1,060 lm
		3000K	89 lm/W	1,096 lm
		3500K	94 lm/W	1,152 lm
		4000K	97 lm/W	1,179 lm
		5000K	95 lm/W	1,180 lm
WFRL6R139FA120WS	13W	2700K	77 lm/W	1,005 lm
		3000K	80 lm/W	1,041 lm
		3500K	86 lm/W	1,115 lm
		4000K	88 lm/W	1,143 lm
		5000K	87 lm/W	1,134 lm
WFRL6R139FA120WBS	13W	2700K	78 lm/W	1,008 lm
		3000K	80 lm/W	1,046 lm
		3500K	86 lm/W	1,117 lm
		4000K	88 lm/W	1,148 lm
		5000K	88 lm/W	1,139 lm
WFRL6R139FA120WB	13W	2700K	77 lm/W	1,003 lm
		3000K	80 lm/W	1,042 lm
		3500K	85 lm/W	1,100 lm
		4000K	88 lm/W	1,140 lm
		5000K	87 lm/W	1,131 lm
WFRL6R149FA120WS	14W	2700K	86 lm/W	1,208 lm
		3000K	87 lm/W	1,214 lm
		3500K	90 lm/W	1,258 lm
		4000K	91 lm/W	1,275 lm
		5000K	90 lm/W	1,253 lm
WFRL6R149FA120WB	14W	2700K	82 lm/W	1,153 lm
		3000K	84 lm/W	1,169 lm
		3500K	87 lm/W	1,221 lm
		4000K	88 lm/W	1,233 lm
		5000K	86 lm/W	1,206 lm

# 6" Round, CCT-Adjustable WFRL Edge-Lit Wafer



## TECHNICAL SPECIFICATIONS

### MODULE CONSTRUCTION

<b>Product Type</b>	<b>Finish</b>
Slim canless wafer downlights	White or black
<b>Size</b>	<b>Lens Finish</b>
6"	Polycarbonate
<b>Shape</b>	
Round	
<b>Trim Style</b>	
Smooth or baffle	
<b>Enclosure Material</b>	
Dead front (non-metallic) trim for corrosive environments. Aluminum back plate for effective heat dissipation	

### REMOTE DRIVER CONSTRUCTION

<b>Remote Driver/Junction Box</b>
Die-formed metal driver / junction box with captive hinged junction box cover. Listed for maximum of (4) 12AWG through branch circuit conductor suitable for 90° C permitted in box. Easy to wire in 2in/2out (plus ground) applications. (4) conduit pry-outs. (3) quick snap-in connectors for quick and reliable line voltage connections. Integral mounting facilitates direct mounting to building structure or mounting frame.
<b>Mounting</b>
No housing is required, two tension steel spring clips secure luminaire to ceiling. Accommodates ceiling thickness up to 15/16". New construction frames are available.
<b>Cable</b>
FT5 Plenum Rated Cable (per UL2043)

### LED CHARACTERISTICS

<b>Beam Angle</b>
110°
<b>Color Temperature</b>
Field adjustable via dip switch 2700/3000/3500/4000/5000K
<b>Color Accuracy (CRI)</b>
90+ CRI
<b>R9 Value</b>
High color performance with R9 greater than 50
<b>Color Consistency</b>
<4-step (2700K & 5000K) MacAdam Ellipse binning to achieve consistent fixture-to-fixture color
<b>Color Stability</b>
LED color temperature is warranted to shift no more than 200K in color temperature over a 5-year period
<b>Color Uniformity</b>
RAB's range of Correlated Color Temperature follows the guidelines of the American National Standard for Specifications for the Chromaticity of Solid State Lighting (SSL) Products, ANSI C78.377-2017.

### OTHER

<b>Warranty</b>
RAB warrants that our LED products will be free from defects in materials and workmanship for a period of five (5) years from the date of delivery to the end user, including coverage of light output, color stability, driver performance and fixture finish. RAB's warranty is subject to all terms and conditions found at <a href="http://rablighting.com/warranty">rablighting.com/warranty</a> .

### ELECTRICAL

<b>Dimmable</b>
Yes, dimmable down to 10% on compatible TRIAC/ELV dimming systems. See Dimmer Compatibility List.
<b>Driver</b>
Constant Current, Class 2 60 Hz; 120V: 54 mA
<b>Power Factor</b>
≥0.9
<b>Input Voltage</b>
120V
<b>Operating Frequency</b>
60Hz
<b>Operating Temperature</b>
-4°F to 104°F (-20°C to 40°C)
<b>THD</b>
≤20%

### COMPLIANCE

<b>Listings</b>
UL Listed
<b>Environment</b>
Suitable for use indoors and outdoors in dry, damp, or wet environments.
<b>IC Rated</b>
Suitable for direct contact with insulation. Type IC inherently protected, suitable for direct contact to air permeable insulation and cULus listed for damp locations. Not for use in direct contact with spray foam insulation, consult NEMA LSD57-2013.
<b>Air Tight</b>
Housing certified Air Tight as per ASTM E283
<b>Energy Star Approved</b>
This product is ENERGY STAR® Certified.
<b>California Title 24 JA8 Compliant</b>
Can be used to conform with the requirements of California Title 24 Part 6.
<b>California Energy Commission (CEC) Status</b>
Lawful for Sales in California
<b>NEC Compliant</b>
Suitable for use in closets. Compliant with NEC Sec. 410.16 (A)(1) and 410.16 (C3).
<b>IESNA LM-79 &amp; LM80 Testing</b>
RAB LED luminaires and LED components have been tested by an independent laboratory in accordance with IESNA LM-79 and LM-80.
<b>FCC</b>
Complies with Part 15 of the FCC Rules.
<b>RoHS</b>
Mercury and UV free. RoHS-compliant components.

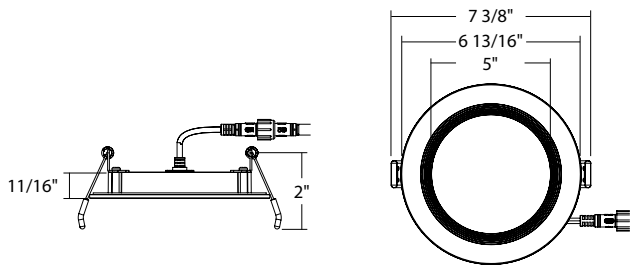


6" Round, CCT-Adjustable WFRL Edge-Lit Wafer

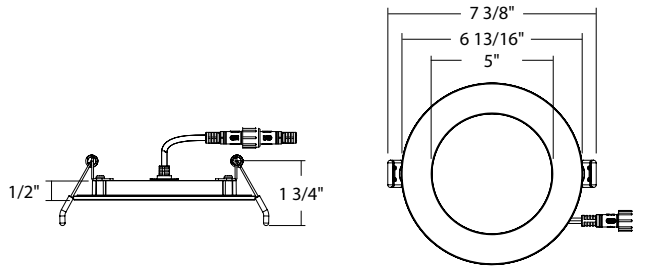
RAB

DIMENSIONS

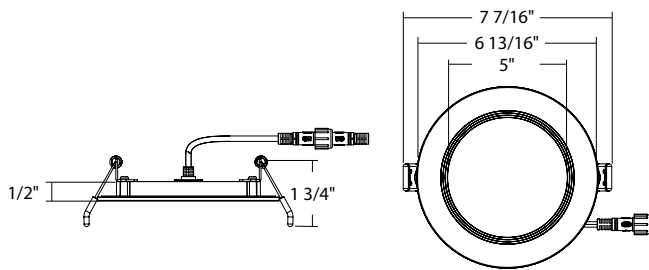
Baffle, Round



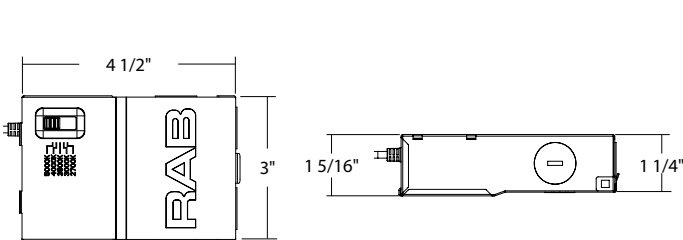
Smooth, Round



Shallow Baffle, Round

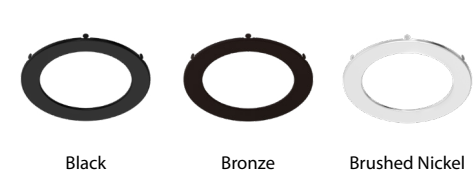


Driver/Junction Box



ACCESSORIES

Color Trim



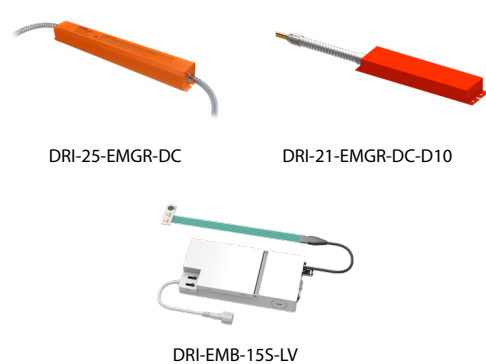
Catalog Number	UPC	Description
WFRL-TRIM-6R-BS	192552013680	6" Color trim round baffle black
WFRL-TRIM-6R-BRS	192552013697	6" Color trim round baffle bronze
WFRL-TRIM-6R-BNS	192552013703	6" Color trim round baffle brushed nickel

Goof Rings



Catalog Number	UPC	Description
WFRL-GOOF-6R-8R-W	192552013611	6"-8" Goof ring round white

Emergency Driver



Catalog Number	UPC	Description
DRI-25-EMGR-DC	19813519180	Emergency driver 100-277V 25W
DRI-21-EMGR-DC-D10	192552028264	Emergency driver 100-277V 21W 0-10V T20
DRI-EMB-15S-LV	192552045650	Emergency backup driver

# 6" Round, CCT-Adjustable WFRL Edge-Lit Wafer



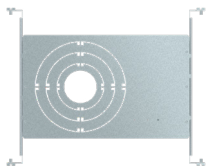
## ACCESSORIES (CONT'D)

### Extension Cables



Catalog Number	UPC	Description
EXTCBL-FA-6	019813908502	6' Extension Cable for Wafer FA
EXTCBL-FA-12	019813908519	12' Extension Cable for Wafer FA
EXTCBL-FA-20	019813908526	20' Extension Cable for Wafer FA

### Mounting Plates



DLPLATE/WFR3468/NB



DLPLATE/WFR3456



DLPLATE/WFR6/NB/CL



DLPLATE/WFR6

Catalog Number	UPC	Description
DLPLATE/WFR3468/NB	192552000673	Mounting plate for 3", 4", 6", 8" with nailer bar
DLPLATE/WFR3456	192552025584	Mounting plate for 3", 4", 5", 6" Wafer
DLPLATE/WFR6/NB/CL	0192552037006	Mounting plate for 6" wafer with nailer bar and drywall collar
DLPLATE/WFR6	192552039826	Mounting plate for 6" wafer

## ORDERING INFO

Catalog Number	Model Number	UPC	Case Pack
WFRL6R139FA120BS	DLW0130(WFRL6R139FA120BS)	192552048019	6
WFRL6R139FA120BB	DLW0131(WFRL6R139FA120BB)	192552048026	6
WFRL6R139FA120WB	DLW0056(WFRL6R139FA120WB)	19813682488	6
WFRL6R139FA120WBS	DLW0095(WFRL6R139FA120WBS)	192552024273	6
WFRL6R139FA120WS	DLW0055(WFRL6R139FA120WS)	19813682471	6
WFRL6R149FA120WB	DLW0077(WFRL6R149FA120WB)	192552013475	6
WFRL6R149FA120WS	DLW0076(WFRL6R149FA120WS)	192552013468	6

## ORDERING MATRIX

Family	Size	Shape	Wattage		CRI/Color Temp		Driver		Finish		Trim		Trim Depth			
WFRL	6	R			9FA			120								
	6 6"	R Round	13 14	13W 14W	9FA	90CRI; 2700/3000/3500/4000/5000K		120	120V; TRIAC/ELV		W B	White Black*	S B	Smooth Baffle	Blank S	Standard Shallow

\*Black finish only available on 6" 13W

# 8" Round, CCT-Adjustable WFRL Edge-Lit Wafer



Smooth

Baffle



PROJECT:

DATE:

TYPE:

PREPARED BY:



8", Smooth & Baffle, CCT Adjustable, 120V, Triac Dimmable



## KEY FEATURES

- Round, slim, canless downlights
- Smooth, baffle, and shallow baffle trims
- 5 Selectable CCTs (2700/3000/3500/4000/5000K)
- 120V TRIAC dimmable driver down to 10%
- IC Rated, air tight, wet location and Energy Star

## PERFORMANCE

Catalog Number	Size	Trim	Equivalency	Input Wattage	Lumens	Efficacy	Color Temperature	L70 Lifetime
WFRL8R239FA120WB	8"	Baffle	150W Incandescent	23W	2100 lm	83 lm/W	Field-Adjustable 2700/3000/3500/4000/5000K	50,000 hrs
WFRL8R239FA120WS		Smooth						

## PHOTOMETRIC

Catalog Number	Wattage	CCT	Efficacy	Lumens
WFRL8R239FA120WB	23W	2700K	84 lm/W	1,940 lm
		3000K	88 lm/W	2,015 lm
		3500K	93 lm/W	2,144 lm
		4000K	95 lm/W	2,191 lm
		5000K	93 lm/W	2,147 lm
WFRL8R239FA120WS	23W	2700K	85 lm/W	1,951 lm
		3000K	88 lm/W	2,024 lm
		3500K	94 lm/W	2,157 lm
		4000K	96 lm/W	2,205 lm
		5000K	94 lm/W	2,157 lm

# 8" Round, CCT-Adjustable WFRL Edge-Lit Wafer



## TECHNICAL SPECIFICATIONS

### MODULE CONSTRUCTION

**Product Type**

Slim canless wafer downlights

**Size**

8"

**Shape**

Round

**Trim Style**

Smooth or baffle

**Enclosure Material**

Dead front (non-metallic) trim for corrosive environments. Aluminum back plate for effective heat dissipation

**Finish**

White

**Lens Finish**

Polycarbonate

### REMOTE DRIVER CONSTRUCTION

**Remote Driver/Junction Box**

Die-formed metal driver / junction box with captive hinged junction box cover. Listed for maximum of (4) 12AWG through branch circuit conductor suitable for 90° C permitted in box. Easy to wire in 2in/2out (plus ground) applications. (4) conduit pry-outs. (3) quick snap-in connectors for quick and reliable line voltage connections. Integral mounting facilitates direct mounting to building structure or mounting frame.

**Mounting**

No housing is required, two tension steel spring clips secure luminaire to ceiling. Accommodates ceiling thickness up to 15/16". New construction frames are available.

**Cable**

FT5 Plenum Rated Cable (*per UL2043*)

### LED CHARACTERISTICS

**Beam Angle**

110°

**Color Temperature**

Field adjustable via dip switch 2700/3000/3500/4000/5000K

**Color Accuracy (CRI)**

90+ CRI

**R9 Value**

High color performance with R9 greater than 50

**Color Consistency**

<4-step (2700K & 5000K) MacAdam Ellipse binning to achieve consistent fixture-to-fixture color

**Color Stability**

LED color temperature is warrantied to shift no more than 200K in color temperature over a 5-year period

**Color Uniformity**

RAB's range of Correlated Color Temperature follows the guidelines of the American National Standard for Specifications for the Chromaticity of Solid State Lighting (SSL) Products, ANSI C78.377-2017.

### OTHER

**Warranty**

RAB warrants that our LED products will be free from defects in materials and workmanship for a period of five (5) years from the date of delivery to the end user, including coverage of light output, color stability, driver performance and fixture finish. RAB's warranty is subject to all terms and conditions found at [rablighting.com/warranty](http://rablighting.com/warranty).

### ELECTRICAL

**Dimmable**

Yes, dimmable down to 10% on compatible TRIAC/ELV dimming systems. See Dimmer Compatibility List.

**Driver**

Constant Current, Class 2 60 Hz; 120V: 54 mA

**Power Factor**

≥0.9

**Input Voltage**

120V

**Operating Frequency**

60Hz

**Operating Temperature**

-4°F to 104°F (-20°C to 40°C)

**THD**

≤20%

### COMPLIANCE

**Listings**

UL Listed

**Environment**

Suitable for use indoors and outdoors in dry, damp, or wet environments.

**IC Rated**

Suitable for direct contact with insulation.

Type IC inherently protected, suitable for direct contact to air permeable insulation and cULus listed for damp locations. Not for use in direct contact with spray foam insulation, consult NEMA LSD57-2013.

**Air Tight**

Housing certified Air Tight as per ASTM E283

**Energy Star Approved**

This product is ENERGY STAR® Certified.

**California Title 24 JA8 Compliant**

Can be used to conform with the requirements of California Title 24 Part 6.

**California Energy Commission (CEC) Status**

Lawful for Sales in California

**NEC Compliant**

Suitable for use in closets. Compliant with NEC Sec. 410.16 (A)(1) and 410.16 (C3).

**IESNA LM-79 & LM80 Testing**

RAB LED luminaires and LED components have been tested by an independent laboratory in accordance with IESNA LM-79 and LM-80.

**FCC**

Complies with Part 15 of the FCC Rules.

**RoHS**

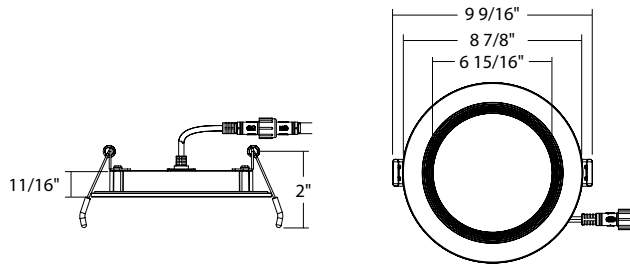
Mercury and UV free. RoHS-compliant components.

# 8" Round, CCT-Adjustable WFRL Edge-Lit Wafer

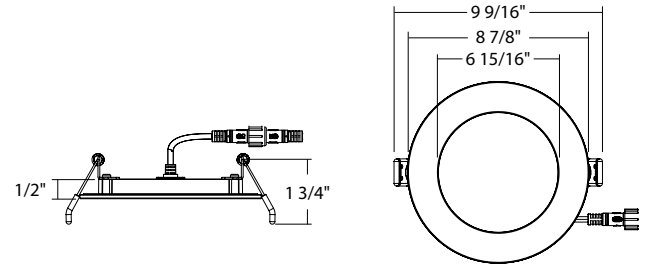


## DIMENSIONS

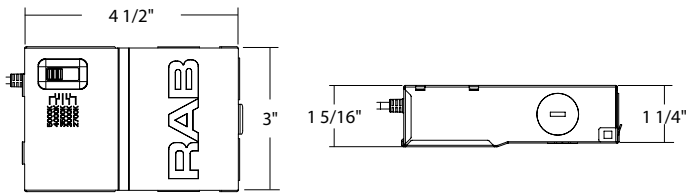
### Baffle, Round



### Smooth, Round

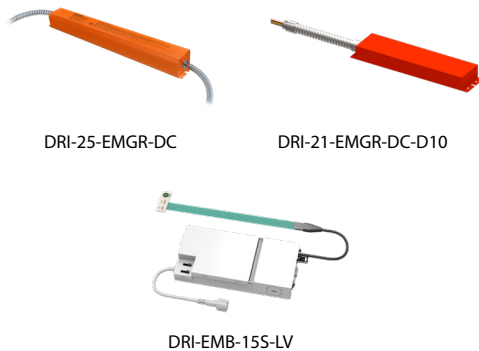


### Driver/Junction Box



## ACCESSORIES

### Emergency Driver



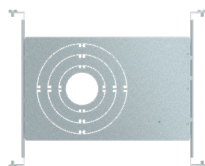
Catalog Number	UPC	Description
DRI-25-EMGR-DC	19813519180	Emergency driver 100-277V 25W
DRI-21-EMGR-DC-D10	192552028264	Emergency driver 100-277V 21W 0-10V T20
DRI-EMB-15S-LV	192552045650	Emergency backup driver

### Extension Cables



Catalog Number	UPC	Description
EXTCBL-FA-6	019813908502	6' Extension Cable for Wafer FA
EXTCBL-FA-12	019813908519	12' Extension Cable for Wafer FA
EXTCBL-FA-20	019813908526	20' Extension Cable for Wafer FA

### Mounting Plates



Catalog Number	UPC	Description
DLPLATE/WFR3468/NB	192552000673	Mounting plate for 3", 4", 6", 8" with nailer bar

8" Round, CCT-Adjustable WFRL Edge-Lit Wafer

RAB

ORDERING INFO			
Catelog Number	Model Number	UPC	Case Pack
WFRL8R239FA120WB	DLW0064(WFRL8R239FA120WB)	192552013482	4
WFRL8R239FA120WS	DLW0065(WFRL8R239FA120WS)	192552013499	4

ORDERING MATRIX																
Family		Size		Shape		Wattage		CRI/Color Temp			Driver		Finish		Trim	
WFRL		8		R		23		9FA			120		W			
8	8"	R	Round	23	23W	9FA	90CRI; 2700/3000/3500/4000/5000K			120	120V; TRIAC/ELV		W	White	S B	Smooth Baffle

# CCT- Adjustable WFRL Edge-Lit Wafer

## Dimmer Compatibility List



Number	Dimmer Brand	Dimmer Catalog Number	Dimmer compatibility						
			1 Lamp	2 Lamps	3 Lamps	4 Lamps	5 Lamps	6 Lamps	Range
1	LUTRON	SCL-153P	✓	✓	✓	✓	✓	✓	10%
2	LUTRON	DVCL-153P	✓	✓	✓	✓	✓	✓	10%
3	LEGRAND	DCL453PTCCCV6	✓	✓	✓	✓	✓	✓	10%
4	LUTRON	TGCL-153PH-WH	✓	✓	✓	✓	✓	✓	10%
5	LEVITON	R50-IPL06-10M	✓	✓	✓	✓	✓	✓	10%
6	LUTRON	DVWCL-153PH-WH	✓	✓	✓	✓	✓	✓	10%
7	RAB	XDIM	✓	✓	✓	✓	✓	✓	10%