

NQZ2-61TWTW-MPW

6" Quartz LED Downlight with Selectable Lumens & Selectable CCT

Source: 12W to 20W LED
1350lm to 2200lm

Type

Project

Catalog No.

Notes

PRODUCT DESCRIPTION

Quartz Series series is an architectural and commercial grade LED high lumen downlight. Each luminaire includes two tunable switches; Selectable Lumens allows the end user to determine the wattage input & Selectable CCT changes the color temperature appearance. Reflectors include two tension steel spring clips, which allow the luminaires to install without any frame-in or housing for an easy installation.

FEATURES

- Can-less installation (No frame-in or housing required)
- Easy installation for retrofit, remodel or new construction applications
- Selectable Lumen switch changes output from 1350lm to 2200lm
- Selectable CCT switch changes color temperature from 3000K / 3500K / 4000K
- Field changeable reflector allows for easy customization
- 120-277V input and 0-10V dimming
- 5-year limited warranty
- ENERGY STAR certified
- cULus Listed for Wet Locations

SPECIFICATION

Reflector: Aluminum spun reflector with deep set diffused lens for excellent visual comfort while providing high lumen output. Each reflector comes standard with matte powder white finish, optional snap-in reflectors are available and field changeable.

Tunable Switches: Each luminaire includes two switches on the top of the driver enclosure. Selectable Lumen switch changes the lumen output and wattage. Selectable CCT switch changes the color temperature.

Clearance: "IC" Insulated ceiling housings are direct contact rated. Not to be used in direct contact with spray foam insulation.

Mounting: No housing is required, two tensions steel spring clips accommodate ceiling thickness from 1/2" to 1-1/2". New construction frame-in can be ordered separately ([NQZ-6R-F](#)).

ELECTRICAL

Input Voltage: 120-277V

Lumens / Wattage: Selectable Lumens: 1350lm / 12W, 1850lm / 16W and 2200lm / 20W (*Note: Preset to 20W*)

Beam Spread: 94° Wide Flood

Color Temperature: Selectable CCT: 3000K / 3500K / 4000K (*Note: Preset to 3000K*)

Color Rendering Index: 90+CRI

Operating Temperature: 0°C - 40°C

Lifetime: 72,000 hours @ L70

Dimming: Dimmable down to 10% with 0-10V dimmer

[Click Here](#) or check complete dimmer list at www.NoraLighting.com in the "Compatibility" page under "Resources" tab

Emergency: Luminaire is compatible with [NEPK-20LEDUNV](#) (ordered separately). Battery operates luminaire at 20W for 90 minute emergency operation with a fully charged battery.

LABELS AND LISTINGS

- cETLus Listed for Wet Locations
- cETLus classified for retrofit installations
- ENERGY STAR certified
- [5-Year Limited Warranty](#)
- FCC compliant
- Certified to the high efficacy requirements of California Title 24 JA8-2019



Performance Data

| CCT | 12W | 16W | 20W |
|--------------|--------|--------|--------|
| 3000K | 1354lm | 1756lm | 2079lm |
| 3500K | 1378lm | 1894lm | 2238lm |
| 4000K | 1333lm | 1743lm | 2045lm |

Delivered lumens will vary depending on finish

PRODUCT IMAGES AND DIMENSIONS



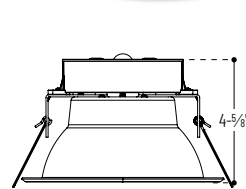
Selectable Lumens

Three position sliding switch
1350lm / 1850lm / 2200lm

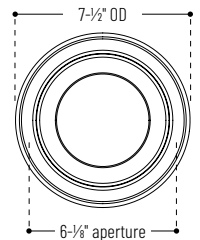


Selectable CCT

Three position sliding switch
3000K / 3500K / 4000K



Ceiling Cut-Out: 6-1/4" Ø



7-1/2" OD
6-1/8" aperture



NQZ2-61TWTW-MPW / NQZ-61REFLC
6" Quartz with Specuar Clear Reflector Insert



NQZ2-61TWTW-MPW / NQZ-61REFLD
6" Quartz with Clear Diffused Reflector Insert



NQZ2-61TWTW-MPW / NQZ-61REFLHZ
6" Quartz with Haze Reflector Insert

6" Quartz LED Downlight with Selectable Lumens & Selectable CCT

| Aperture | Lumens / Wattage / Color Temperature | Reflector / Flange Finish |
|----------------------------|---|----------------------------------|
| NQZ2-61 = 6" Quartz | TWTW = 1350lm / 1850lm / 2200lm 3000K / 3500K / 4000K | -MPW = Matte Powder White |

Optional Accessories

| Description |
|---|
| NQZ-6R-F = 6" New Construction Frame-In |
| NQZ-61REFLC = 6" Specular Clear Snap-in Reflector Insert |
| NQZ-61REFLD = 6" Clear Diffused Snap-in Reflector Insert |
| NQZ-61REFLHZ = 6" Haze Snap-in Reflector Insert |
| NEPK-20LEDUNV = 20W Emergency Battery w/Remote Test Switch |

Example: **NQZ2-61TWTW-MPW** = 6" Quartz LED Downlight with Selectable Lumens & Selectable CCT, Matte Powder White

NQZ2-61WTW-MPW

6" Quartz LED Downlight Accessories

| | |
|-------------|-------|
| Type | _____ |
| Project | _____ |
| Catalog No. | _____ |
| Notes | _____ |



New Construction Frame-In Kit

NQZ-6R-F
For new construction pre-wiring and easier layout planning.



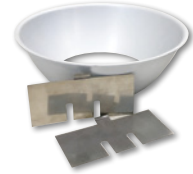
Specular Clear Reflector Insert

NQZ-61REFLC
Snap-in reflector is field changeable and fits over 6" Quartz downlight.



Diffused Clear Reflector Insert

NQZ-61REFLD
Snap-in reflector is field changeable and fits over 6" Quartz downlight.



Haze Reflector Insert

NQZ-61REFLH
Snap-in reflector is field changeable and fits over 6" Quartz downlight.



20W Emergency Battery with Remote Test Switch

NEPK-20LEDUNV
120-277V 20W emergency battery operates luminaire for 90 minute emergency operation with a fully charged battery. Requires 24 hours to for full charge.

PHOTOMETRICS

6" Quartz LED Downlight with Selectable Lumens & Selectable CCT

Type

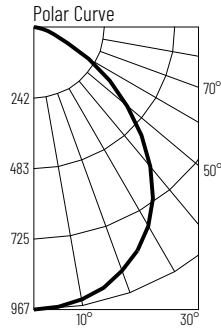
Project

Catalog No.

Notes

Test Information

Test Number: NTR1958R2
 Part Number: NQZ2-61TWTW-MPW
 Beam Spread: 94° Wide Flood
 Lumens: 2079lm
 Wattage: 20.07W
 Efficacy: 104lpw
 CCT / CRI: 3000K / 90 CRI
 Spacing Criteria (0°-180°): 1.22
 Spacing Criteria (90°-270°): 1.2



Illuminance at a Distance

| Distance from Luminaire | FC at Nadir | Beam Diameter |
|-------------------------|-------------|---------------|
| 6' | 26.9fc | 12'-11" |
| 8' | 15.1fc | 17'-4" |
| 10' | 9.7fc | 21'-7" |
| 12' | 6.7fc | 25'-11" |
| 14' | 4.9fc | 30'-2" |

Zonal Lumen Summary

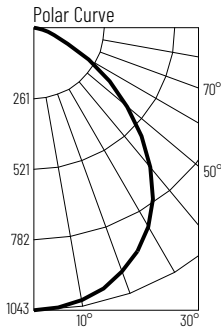
| Zone | Lumens | % Luminaire |
|--------|--------|-------------|
| 0-30 | 737 | 35.4 |
| 0-40 | 1180 | 56.8 |
| 0-60 | 1870 | 90 |
| 0-90 | 2079 | 100 |
| 90-180 | 0 | 0 |
| 0-180 | 2079 | 100 |

Candela Table

| Vertical Angles | Candela |
|-----------------|---------|
| 0 | 967 |
| 5 | 962 |
| 15 | 924 |
| 25 | 845 |
| 35 | 716 |
| 45 | 528 |

Test Information

Test Number: NTR1959R2
 Part Number: NQZ2-61TWTW-MPW
 Beam Spread: 94° Wide Flood
 Lumens: 2238lm
 Wattage: 19.13W
 Efficacy: 117lpw
 CCT / CRI: 3500K / 90 CRI
 Spacing Criteria (0°-180°): 1.22
 Spacing Criteria (90°-270°): 1.2



Illuminance at a Distance

| Distance from Luminaire | FC at Nadir | Beam Diameter |
|-------------------------|-------------|---------------|
| 6' | 29fc | 12'-11" |
| 8' | 16.3fc | 17'-2" |
| 10' | 10.4fc | 21'-6" |
| 12' | 7.2fc | 25'-10" |
| 14' | 5.3fc | 30'-1" |

Zonal Lumen Summary

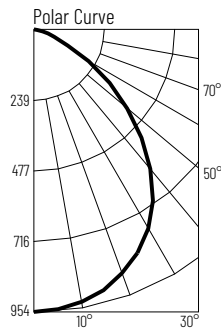
| Zone | Lumens | % Luminaire |
|--------|--------|-------------|
| 0-30 | 794 | 35.5 |
| 0-40 | 1272 | 56.8 |
| 0-60 | 2013 | 90 |
| 0-90 | 2238 | 100 |
| 90-180 | 0 | 0 |
| 0-180 | 2238 | 100 |

Candela Table

| Vertical Angles | Candela |
|-----------------|---------|
| 0 | 1043 |
| 5 | 1038 |
| 15 | 995 |
| 25 | 911 |
| 35 | 772 |
| 45 | 567 |

Test Information

Test Number: NTR1960R2
 Part Number: NQZ2-61TWTW-MPW
 Beam Spread: 94° Wide Flood
 Lumens: 2045lm
 Wattage: 19.89W
 Efficacy: 103lpw
 CCT / CRI: 4000K / 90 CRI
 Spacing Criteria (0°-180°): 1.22
 Spacing Criteria (90°-270°): 1.2



Illuminance at a Distance

| Distance from Luminaire | FC at Nadir | Beam Diameter |
|-------------------------|-------------|---------------|
| 6' | 26.5fc | 12'-10" |
| 8' | 14.9fc | 17'-1" |
| 10' | 9.5fc | 21'-5" |
| 12' | 6.6fc | 25'-8" |
| 14' | 4.9fc | 29'-11" |

Zonal Lumen Summary

| Zone | Lumens | % Luminaire |
|--------|--------|-------------|
| 0-30 | 726 | 35.5 |
| 0-40 | 1162 | 56.8 |
| 0-60 | 1838 | 89.9 |
| 0-90 | 2045 | 100 |
| 90-180 | 0 | 0 |
| 0-180 | 2045 | 100 |

Candela Table

| Vertical Angles | Candela |
|-----------------|---------|
| 0 | 954 |
| 5 | 949 |
| 15 | 911 |
| 25 | 833 |
| 35 | 705 |
| 45 | 516 |

Lumen Output Multipliers

Wattage: 12W (0.64), 16W (0.85)