

NOXAC-56 Series

5"/6" AC Onyx Retrofit Reflectors

Source: 12.5W
750lm

PRODUCT DESCRIPTION

AC Onyx 5"/6" Retrofit Series requires no driver and allow for a sleek design. Spun aluminum construction provides clean sharp edges and is suitable for use with most 5" and 6" recessed housings. Deep regressed optics and round aperture deliver even and glare-free illumination.

FEATURES

- 750lm / 12.5W LED light engine
- 2700K, 3000K, 3500K, 4000K or 5000K @ 90+ CRI
- Dimmable AC LED
- Includes medium base socket adaptor for easy retrofitting in 5" or 6" recessed housings
- 5-year limited warranty
- ENERGY STAR certified
- cULus classified for wet locations

SPECIFICATION

Reflector: One piece, spun aluminum construction dissipates heat and extends life. Unitized Thermal Management, UTM, provides exceptional cool operation.

Housings: Compatible with most 5" and 6" IC and non-IC housings by Nora and others.

Mounting: Two steel, torsion mounting springs allow for easy and secure mounting in most 5" and 6" housings.

Retrofit: Onyx retrofit series includes medium base screw-socket adapter (NRA-211SM) for retrofitting into existing medium base downlight housings. GU24 socket adapter is available for use with GU24 housings, must specify NRA-212SM.

ELECTRICAL

Input Voltage: 120V

Lumens / Wattage: 750lm / 12.5W

Color Temperature:

2700K, 3000K, 3500K, 4000K or 5000K

CRI: 90+CRI

Dimming: Triac or ELV

[Click Here](#) or check complete dimmer list at

www.NoraLighting.com in the "Compatibility" page under "Resources" tab

COMPATIBLE HOUSINGS

Onyx reflectors are compatible with most 5" & 6" IC and Non-IC housings by Nora and others.

Fire Box

- NFBIC-5INCATA 5" ICAT Fire Box
- NFBIC-5LMRATA* 5" ICAT Dedicated LED Fire Box
- NFBIC-6INCATA 6" ICAT Fire Box
- NFBIC-6LMRATA* 6" ICAT Dedicated LED Fire Box

New Construction

- NHIC-5LMRAT* 5" ICAT Dedicated LED
- NHICCP-5LMRAT* 5" Chicago Plenum Dedicated LED
- NHIC-5LMRAT/277*¹ 5" ICAT Dedicated LED, 277V
- NHIC-527LMRAT* 5" ICAT Shallow Dedicated LED
- NHIC-501QAT 5" ICAT Line Voltage
- NHIC-527QAT 5" ICAT Shallow Line Voltage
- NH-501Q 5" Line Voltage
- NHIC-5G24ATFL 5" ICAT GU24
- NHIC-6LMRAT* 6" ICAT Dedicated LED
- NHICCP-6LMRAT* 6" Chicago Plenum Dedicated LED
- NHIC-6LMRAT/277*¹ 6" ICAT Dedicated LED, 277V
- NHIC-27LMRAT* 6" ICAT Shallow Dedicated LED
- NHIC-17QAT 6" ICAT Line Voltage
- NHIC-17QNBAT 6" ICAT Line Volt (No Bracket)
- NHIC-27QAT 6" ICAT Shallow Line Voltage
- NH-26Q 6" Line Voltage
- NH-26QNB 6" Line Voltage (No Bracket)
- NHIC-6G24ATFL 6" ICAT GU24

Remodel

- NHRIC-5LMRAT* 5" ICAT Dedicated LED
- NHRIC-527LMRAT* 5" ICAT Shallow Dedicated LED
- NHRIC-504QAT 5" ICAT Line Voltage
- NHRIC-527QAT 5" ICAT Shallow Line Voltage
- NHR-504Q 5" Line Voltage
- NHRIC-5G24ATFL 5" ICAT GU24
- NHRIC-6LMRAT* 6" ICAT Dedicated LED
- NHRIC-27LMRAT* 6" ICAT Shallow Dedicated LED
- NHRIC-17QAT 6" ICAT Line Voltage
- NHRIC-17QNBAT 6" ICAT Line Volt (No Bracket)
- NHRIC-27QAT 6" ICAT Shallow Line Voltage
- NHR-26Q 6" Line Voltage
- NHRIC-6G24ATFL 6" ICAT GU24

* Nora LED Dedicated housings are cULus listed for use only with Nora LED Retrofits.

¹ Housings include a step down transformer

LABELS AND LISTINGS

- cULus classified for Wet Locations
- ENERGY STAR certified
- [5-Year Limited Warranty](#)
- Meets ASTM-E283 Air-Tight requirements
- FCC compliant
- Can be used to comply with 2016 Title 24 - part 6 High Efficacy LED light source requirements



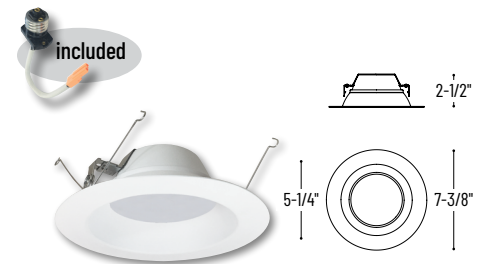
Type

Project

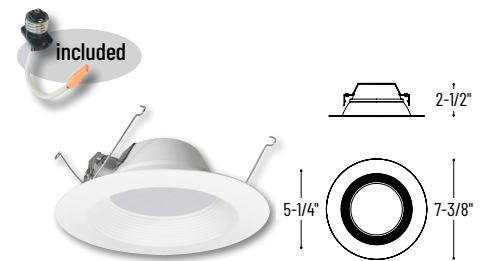
Catalog No.

Notes

PRODUCT IMAGES AND DIMENSIONS



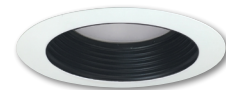
NOXAC-5631
Reflector



NOXAC-5632
Baffle



NOXAC-5631 / NOX-56REFLHZ
5"/6" Onyx Reflector with Haze Reflector Insert



NOXAC-5631 / NOX-56BAFB
5"/6" Onyx Reflector with Black Baffle Insert

5"/6" AC Onyx Reflectors

Reflector Type	Color Temperature / CRI	Finish
NOXAC-5631 = Round Reflector	27 = 2700K / 90 CRI	WW = White / White Flange
NOXAC-5632 = Round Baffle	30 = 3000K / 90 CRI	
	35 = 3500K / 90 CRI	
	40 = 4000K / 90 CRI	
	50 = 5000K / 90 CRI	

Optional Accessories

Description
NOX-56REFLB = 5"/6" Black Reflector Insert for NOXAC-5631
NOX-56REFLFD = 5"/6" Clear Diffused Reflector Insert for NOXAC-5631
NOX-56REFLHZ = 5"/6" Haze Reflector Insert for NOXAC-5631
NOX-56BAFB = 5"/6" Black Baffle Insert for NOXAC-5631
NOX-56BAFW = 5"/6" White Baffle Insert for NOXAC-5631
NOX-56EYELIDW = 5"/6" Round White Eyelid
NOX-56OR-W = 5"/6" Round White Oversize Ring
NOX-56BLADE = 5"/6" Blade for housings without spring brackets
NRA-211SM = Medium base screw-in socket (included w/ each)
NRA-212SM = Socket adapter for use with GU24 housings

Example: **NOXAC-563130WW** = 5"/6" AC Onyx, Round Reflector LED Retrofit, 3000K / 90 CRI, White Reflector / White Flange

NOXAC-56 Series

5"/6" AC Onyx Retrofit Reflector Accessories

Type

Project

Catalog No.

Notes



Onyx Reflector Insert

NOX-56REFLB

Black

NOX-56REFLD

Clear Diffused

NOX-56REFLHZ

Haze

Round reflector insert is field changeable used to convert the reflector finish for NOXAC-5631.



Onyx Baffle Insert

NOX-56BAFB

Black

NOX-56BAFW

White

Round baffle insert is field changeable used to convert reflector (NOXAC-5631) to baffle.



Onyx Eyelid

NOX-56EYELIDW

White

Round eyelid clips on reflector or baffle to convert into half moon wall wash

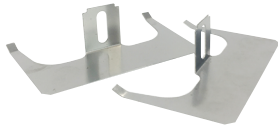


Onyx Oversize Ring

NOX-56OR-W

White

Round oversize ring covers large ceiling cut-outs up to 8-1/4"



Onyx Blade Replacement

NOX-56BLADE

Pair of Two

Replaces torsion springs with mounting blades for recessed housings without spring brackets.



Medium Base Screw-In Socket

NRA-21ISM

Medium base screw-in socket adapter for retrofitting into existing medium base housings. One is included with each luminaire.



Socket Adapter for GU24 Housings

NRA-212SM

GU24 socket adapter for retrofitting into existing GU24 housings.

PHOTOMETRICS

5"/6" AC Onyx Retrofit Reflectors

Type

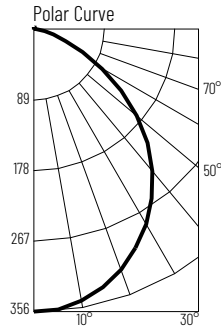
Project

Catalog No.

Notes

Test Information

Test Number: NTR1184
 Part Number: NOXAC-563127WW
 Beam Spread: 97° Wide Flood
 Lumens: 817lm
 Wattage: 12.68W
 Efficacy: 64lpw
 CCT / CRI: 2700K / 90 CRI
 Spacing Criteria (0°-180): 1.2
 Spacing Criteria (90°-270): 1.2



Illuminance at a Distance

Distance from Luminaire	FC at Nadir	Beam Diameter
4'	22.3fc	9'-1"
6'	9.9fc	13'-8"
8'	5.6fc	18'-4"
10'	3.6fc	22'-10"
12'	2.5fc	27'-5"

Zonal Lumen Summary

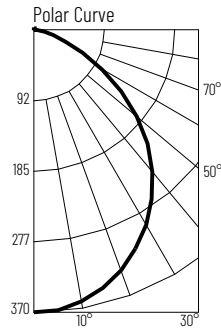
Zone	Lumens	% Luminaire
0-30	269	32.9
0-40	431	52.7
0-60	705	86.3
0-90	808	99
90-180	8	1
0-180	817	100

Candela Table

Vertical Angles	Candela
0	356
5	355
15	337
25	305
35	260
45	203

Test Information

Test Number: NTR1185
 Part Number: NOXAC-563130WW
 Beam Spread: 97° Wide Flood
 Lumens: 850lm
 Wattage: 12.83W
 Efficacy: 66lpw
 CCT / CRI: 3000K / 90 CRI
 Spacing Criteria (0°-180): 1.2
 Spacing Criteria (90°-270): 1.2



Illuminance at a Distance

Distance from Luminaire	FC at Nadir	Beam Diameter
4'	23.1fc	9'-1"
6'	10.3fc	13'-7"
8'	5.8fc	18'-2"
10'	3.7fc	22'-8"
12'	2.6fc	27'-4"

Zonal Lumen Summary

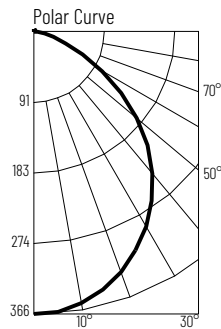
Zone	Lumens	% Luminaire
0-30	279	32.8
0-40	447	52.6
0-60	734	86.3
0-90	842	99
90-180	9	1
0-180	851	100

Candela Table

Vertical Angles	Candela
0	370
5	367
15	349
25	315
35	269
45	210

Test Information

Test Number: NTR1186
 Part Number: NOXAC-563135WW
 Beam Spread: 95° Wide Flood
 Lumens: 824lm
 Wattage: 12.72W
 Efficacy: 65lpw
 CCT / CRI: 3500K / 90 CRI
 Spacing Criteria (0°-180): 1.18
 Spacing Criteria (90°-270): 1.18



Illuminance at a Distance

Distance from Luminaire	FC at Nadir	Beam Diameter
4'	22.7fc	8'-11"
6'	10.1fc	13'-5"
8'	5.7fc	17'-10"
10'	3.6fc	22'-4"
12'	2.5fc	26'-10"

Zonal Lumen Summary

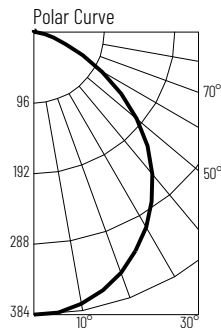
Zone	Lumens	% Luminaire
0-30	273	33.1
0-40	435	52.8
0-60	708	85.9
0-90	816	99
90-180	8	1
0-180	824	100

Candela Table

Vertical Angles	Candela
0	364
5	361
15	343
25	309
35	261
45	203

Test Information

Test Number: NTR1187
 Part Number: NOXAC-563140WW
 Beam Spread: 96° Wide Flood
 Lumens: 869lm
 Wattage: 12.7W
 Efficacy: 68lpw
 CCT / CRI: 4000K / 90 CRI
 Spacing Criteria (0°-180): 1.18
 Spacing Criteria (90°-270): 1.18



Illuminance at a Distance

Distance from Luminaire	FC at Nadir	Beam Diameter
4'	24fc	8'-11"
6'	10.7fc	13'-4"
8'	6fc	17'-10"
10'	3.8fc	22'-2"
12'	2.7fc	26'-8"

Zonal Lumen Summary

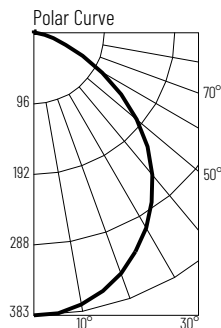
Zone	Lumens	% Luminaire
0-30	287	33.1
0-40	459	52.8
0-60	748	86.1
0-90	860	99
90-180	9	1
0-180	869	100

Candela Table

Vertical Angles	Candela
0	384
5	382
15	363
25	326
35	276
45	214

Test Information

Test Number: NTR1188
 Part Number: NOXAC-563150WW
 Beam Spread: 96° Wide Flood
 Lumens: 862lm
 Wattage: 12.72W
 Efficacy: 68lpw
 CCT / CRI: 5000K / 90 CRI
 Spacing Criteria (0°-180): 1.2
 Spacing Criteria (90°-270): 1.18



Illuminance at a Distance

Distance from Luminaire	FC at Nadir	Beam Diameter
4'	24fc	8'-11"
6'	10.6fc	13'-5"
8'	6fc	17'-11"
10'	3.8fc	22'-5"
12'	2.7fc	26'-10"

Zonal Lumen Summary

Zone	Lumens	% Luminaire
0-30	287	33.3
0-40	459	53.3
0-60	747	86.7
0-90	853	99
90-180	9	1
0-180	862	100

Candela Table

Vertical Angles	Candela
0	383
5	381
15	362
25	326
35	277
45	215