

# NOXAC-4

## 4" AC Onyx Retrofit Reflectors

Source: 10.5W LED  
650lm

### PRODUCT DESCRIPTION

AC Onyx 4" Retrofit Series requires no driver and allow for a sleek design. Spun aluminum construction provides clean sharp edges and is suitable for use with most 4" recessed housings. Deep regressed optics and round aperture deliver even and glare-free illumination.

### FEATURES

- 650lm / 10.5W LED light engine
- 2700K, 3000K, 3500K, 4000K or 5000K @ 90+ CRI
- Dimmable AC LED
- Includes medium base socket adapter for easy retrofitting in 4" recessed housings
- Quick connector is compatible with dedicated LED housings
- 5-year limited warranty
- cULus classified for wet locations
- ENERGY STAR certified

### SPECIFICATION

**Reflector:** One piece, spun aluminum construction dissipates heat and extends life. Unitized Thermal Management, UTM, provides exceptional cool operation.

**Mounting:** Two steel, spring mounting blades allow for easy and secure mounting in most 4" housings.

**Retrofit:** Onyx retrofit series includes medium base screw-socket adapter (NRA-21ISM) for retrofitting into existing medium base downlight housings. GU24 socket adapter is available for use with GU24 housings, must specify NRA-212SM.

### ELECTRICAL

**Input Voltage:** 120V

**Lumens / Wattage:** 650lm / 10.5W

**Color Temperature:** 2700K, 3000K, 3500K, 4000K or 5000K

**CRI:** 90+CRI

**Dimming:** Triac or ELV

[Click Here](#) or check complete dimmer list at [www.NoraLighting.com](http://www.NoraLighting.com) in the "Compatibility" page under "Resources" tab

### COMPATIBLE HOUSINGS

Onyx reflectors are compatible with most 4" IC and Non-IC housings by Nora and others.

#### Fire Box

- NFBIC-4LMRATA\*** IC Air-Tight Dedicated LED Firebox
- NFBIC-427LMRATA\*** Shallow ICAT Dedicated LED Firebox
- NFBIC-4INCATA** IC Air-Tight Line Voltage Firebox

#### New Construction

- NHIC-4LMRAT\*** IC Air-Tight Dedicated LED
- NHIC-4LMRAT/277\*** ICAT Dedicated LED, 277V (includes step-down transformer)
- NHICCP-4LMRAT\*** Chicago Plenum Dedicated LED
- NHIC-427LMRAT\*** Shallow IC Air-Tight Dedicated LED
- NSIC-401QAT** IC Air-Tight Line Voltage
- NS-401QAT** Air-Tight Line Voltage
- NHIC-4G24AT** IC Air-Tight GU24

#### Remodel

- NHRIC-4LMRAT\*** IC Air-Tight Dedicated LED
- NHRIC-427LMRAT\*** Shallow IC Air-Tight Dedicated LED
- NSR-404QAT** Air-Tight Line Voltage
- NHRIC-4G24AT** IC Air-Tight GU24

\* Nora LED Dedicated housings are cULus listed for use only with Nora LED Retrofits.

### ACCESSORIES

**NOX-4REFL:** Round reflector insert used to convert the reflector finish for NOXAC-431. Available in black, haze or clear diffused.

**NOX-4BAF:** Round baffle insert used to convert the reflector for NOXAC-431. Available in black or white.

**NOX-4EYELIDW:** White round eyelid used to convert round reflector or baffle to half moon wall wash trim.

**NOX-4OR-W:** White round oversize ring used to cover ceiling cut-outs up to 5-7/8".

### LABELS AND LISTINGS

- cULus classified for Wet Locations
- ENERGY STAR certified
- [5-Year Limited Warranty](#)
- Meets ASTM-E283 Air-Tight requirements
- FCC compliant
- Can be used to comply with 2016 Title 24 - part 6 High Efficacy LED light source requirements



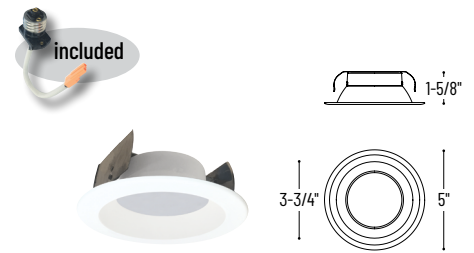
Type

Project

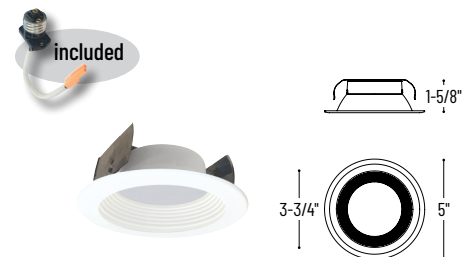
Catalog No.

Notes

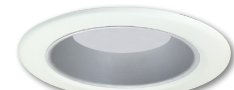
### PRODUCT IMAGES AND DIMENSIONS



**NOXAC-431**  
Round Reflector



**NOXAC-432**  
Round Baffle



**NOXAC-431 / NOX-4REFLHZ**  
4" Onyx Reflector with Haze Reflector Insert



**NOXAC-431 / NOX-4BAFB**  
4" Onyx Reflector with Black Baffle Insert

## 4" AC Onyx Reflectors

Reflector Type	Color Temperature / CRI	Finish
<b>NOXAC-431</b> = Round Reflector	<b>27</b> = 2700K / 90 CRI	<b>WW</b> = White / White Flange
<b>NOXAC-432</b> = Round Baffle	<b>30</b> = 3000K / 90 CRI	
	<b>35</b> = 3500K / 90 CRI	
	<b>40</b> = 4000K / 90 CRI	
	<b>50</b> = 5000K / 90 CRI	

## Optional Accessories

Description
<b>NOX-4REFLB</b> = 4" Black Reflector Insert for NOXAC-431
<b>NOX-4REFLD</b> = 4" Clear Diffused Reflector Insert for NOXAC-431
<b>NOX-4REFLHZ</b> = 4" Haze Reflector Insert for NOXAC-431
<b>NOX-4BAFB</b> = 4" Black Baffle Insert for NOXAC-431
<b>NOX-4BAFW</b> = 4" White Baffle Insert for NOXAC-431
<b>NOX-4EYELIDW</b> = 4" Round White Eyelid
<b>NOX-4OR-W</b> = 4" Round White Oversize Ring
<b>NRA-21ISM</b> = Medium base screw-in socket (included w/ each)
<b>NRA-212SM</b> = Socket adapter for use with GU24 housings

Example: **NOXAC-43130WW** = 4" AC Onyx, Round Reflector LED Retrofit, 3000K / 90 CRI, White Reflector / White Flange

# NOXAC-4 Series

## 4" AC Onyx Retrofit Reflector Accessories

Type	_____
Project	_____
Catalog No.	_____
Notes	_____



Onyx Reflector Insert

- NOX-4REFLB**
- NOX-4REFLD**
- NOX-4REFLHZ**

Black  
Clear Diffused  
Haze

Round reflector insert is field changeable used to convert the reflector finish for NOXAC-431.



Onyx Baffle Insert

- NOX-4BAFB**
- NOX-4BAFW**

Black  
White

Round baffle insert is field changeable used to convert reflector (NOXAC-431) to baffle.



Onyx Eyelid

- NOX-4EYELIDW**

White

Round eyelid clips on reflector or baffle to convert into half moon wall wash



Onyx Oversize Ring

- NOX-4OR-W**

White

Round oversize ring covers large ceiling cut-outs up to 5-7/8"



Medium Base Screw-In Socket

- NRA-21ISM**

Medium base screw-in socket adapter for retrofitting into existing medium base housings. One is included with each luminaire.



Socket Adapter for GU24 Housings

- NRA-212SM**

GU24 socket adapter for retrofitting into existing GU24 housings.

# PHOTOMETRICS

## 4" AC Onyx Retrofit Reflectors

Type

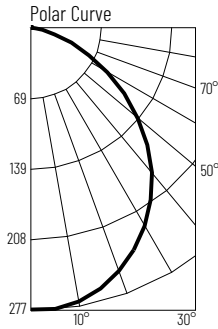
Project

Catalog No.

Notes

### Test Information

Test Number: NTR1179R1  
 Part Number: NOXAC-43127WW  
 Beam Spread: 99° Wide Flood  
 Lumens: 664lm  
 Wattage: 10.74W  
 Efficacy: 62lpw  
 CCT / CRI: 2700K / 90 CRI  
 Spacing Criteria (0°-180): 1.22  
 Spacing Criteria (90°-270): 1.22



### Illuminance at a Distance

Distance from Luminaire	FC at Nadir	Beam Diameter
4'	17.3fc	9'-5"
6'	7.7fc	14'-1"
8'	4.3fc	18'-11"
10'	2.8fc	23'-7"
12'	1.9fc	28'-4"

### Zonal Lumen Summary

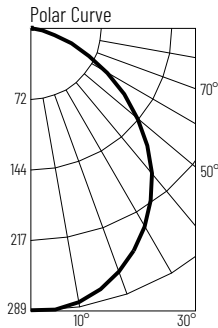
Zone	Lumens	% Luminaire
0-30	210	31.7
0-40	338	51
0-60	563	84.8
0-90	660	99.4
90-180	4	0.6
0-180	664	100

### Candela Table

Vertical Angles	Candela
0	277
5	274
15	263
25	239
35	205
45	162

### Test Information

Test Number: NTR1180R1  
 Part Number: NOXAC-43130WW  
 Beam Spread: 99° Wide Flood  
 Lumens: 688lm  
 Wattage: 10.77W  
 Efficacy: 64lpw  
 CCT / CRI: 3000K / 90 CRI  
 Spacing Criteria (0°-180): 1.2  
 Spacing Criteria (90°-270): 1.22



### Illuminance at a Distance

Distance from Luminaire	FC at Nadir	Beam Diameter
4'	18fc	9'-4"
6'	8fc	14'
8'	4.5fc	18'-7"
10'	2.9fc	23'-4"
12'	2fc	27'-11"

### Zonal Lumen Summary

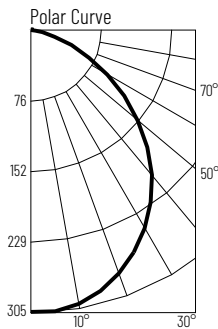
Zone	Lumens	% Luminaire
0-30	219	31.8
0-40	351	51.1
0-60	584	84.9
0-90	684	99.5
90-180	4	0.5
0-180	688	100

### Candela Table

Vertical Angles	Candela
0	288
5	285
15	274
25	248
35	212
45	167

### Test Information

Test Number: NTR1181R1  
 Part Number: NOXAC-43135WW  
 Beam Spread: 99° Wide Flood  
 Lumens: 723lm  
 Wattage: 10.92W  
 Efficacy: 66lpw  
 CCT / CRI: 3500K / 90 CRI  
 Spacing Criteria (0°-180): 1.2  
 Spacing Criteria (90°-270): 1.22



### Illuminance at a Distance

Distance from Luminaire	FC at Nadir	Beam Diameter
4'	19fc	9'-1"
6'	8.4fc	13'-8"
8'	4.7fc	18'-4"
10'	3fc	22'-11"
12'	2.1fc	27'-5"

### Zonal Lumen Summary

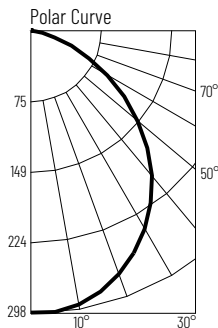
Zone	Lumens	% Luminaire
0-30	230	31.8
0-40	369	51.1
0-60	613	84.8
0-90	719	99.4
90-180	4	0.6
0-180	723	100

### Candela Table

Vertical Angles	Candela
0	304
5	301
15	288
25	260
35	221
45	173

### Test Information

Test Number: NTR1182R1  
 Part Number: NOXAC-43140WW  
 Beam Spread: 99° Wide Flood  
 Lumens: 714lm  
 Wattage: 10.93W  
 Efficacy: 65lpw  
 CCT / CRI: 4000K / 90 CRI  
 Spacing Criteria (0°-180): 1.2  
 Spacing Criteria (90°-270): 1.22



### Illuminance at a Distance

Distance from Luminaire	FC at Nadir	Beam Diameter
4'	18.6fc	9'-2"
6'	8.3fc	13'-10"
8'	4.7fc	18'-6"
10'	3fc	23'-1"
12'	2.1fc	27'-8"

### Zonal Lumen Summary

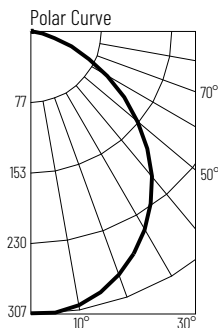
Zone	Lumens	% Luminaire
0-30	226	31.7
0-40	364	50.9
0-60	605	84.7
0-90	710	99.5
90-180	4	0.5
0-180	714	100

### Candela Table

Vertical Angles	Candela
0	298
5	296
15	283
25	255
35	218
45	171

### Test Information

Test Number: NTR1183R1  
 Part Number: NOXAC-43150WW  
 Beam Spread: 99° Wide Flood  
 Lumens: 733lm  
 Wattage: 10.95W  
 Efficacy: 67lpw  
 CCT / CRI: 5000K / 90 CRI  
 Spacing Criteria (0°-180): 1.22  
 Spacing Criteria (90°-270): 1.22



### Illuminance at a Distance

Distance from Luminaire	FC at Nadir	Beam Diameter
4'	19.2fc	9'-5"
6'	8.5fc	14'-1"
8'	4.8fc	18'-10"
10'	3.1fc	23'-6"
12'	2.1fc	28'-2"

### Zonal Lumen Summary

Zone	Lumens	% Luminaire
0-30	233	31.7
0-40	374	51
0-60	622	84.8
0-90	729	99.4
90-180	4	0.6
0-180	733	100

### Candela Table

Vertical Angles	Candela
0	306
5	305
15	291
25	264
35	227
45	179