

NPR-4RNDC

4" Pearl 120V LED Round Retrofit Reflector with Round Aperture

Source: 10W LED
1150lm

PRODUCT DESCRIPTION

Pearl LED Retrofit series is cULus classified for use in existing IC or Non-IC housings manufactured by Nora and others. The 4" retrofit luminaires deliver over 1150 lumens with deep regressed cone reflector for optimal visual cut-off.

FEATURES

- Medium base socket adapter included
- Retrofit existing 4" recessed housings
- Comfort Dim (warm dimming) is available in 700lm only
- 2700K, 3000K, 3500K, 4000K @ 90+ CRI
- Three field changeable optics included
- Integral dimmable driver
- 5-year limited warranty
- cULus classified for wet locations

SPECIFICATION

Construction: Trims are constructed of heat-dissipating die-cast aluminum. A threaded aluminum LED heat sink integrates directly with the trim for optimal heat transfer, while a heat-resistant polycarbonate blend plate enhances overall temperature control and performance.

Mounting: Luminaire includes friction blades to mount securely to housing.

OPTICS

Three field changeable optics (spot, narrow flood and flood - installed) are included with each LED module. Premium 22° and 26° TIR optics are also available.

ELECTRICAL

Input Voltage: 120V

Lumens / Wattage: 1150lm / 10W (700lm w/ Comfort Dim)

Color Temperature: 2700K, 3000K, 3500K, 4000K

Color Rendering Index: 90+CRI

Beam Spread: 26° Spot, 37° Narrow Flood, 59° Flood

Operating Temperature: 0°C to 25°C

Lifetime: 50,000 hours @ L70

Comfort Dim: Comfort Dim color tunes the temperature from a bright 3000K, to a romantic and comfortable 2000K on a gradual, even curve. Available in 700lm only.

Dimming: Triac (leading edge) or ELV (trailing edge)

[Click Here](#) or check complete dimmer list at

www.NoraLighting.com in the "Compatibility" page under "Resources" tab

COMPATIBLE HOUSINGS

Pearl retrofits are compatible with most 4" IC and Non-IC housings by Nora and others.

Fire Box

NFBIC-4LMRATA* ICAT Dedicated LED

NFBIC-4INCATA ICAT Line Voltage

New Construction

NSIC-4LMRAT* Max. Adjustability ICAT Dedicated LED

NHIC-4LMRAT* ICAT Dedicated LED

NHIC-4LMRAT/277* ICAT Dedicated LED, 277V
(includes step-down transformer)

NSIC-401QAT ICAT Line Voltage

NS-401QAT AT Line Voltage

NHIC-4G24AT ICAT GU24

Remodel

NHRIC-4LMRAT* ICAT Dedicated LED

NSRIC-404QAT ICAT Line Voltage

NSR-404QAT AT Line Voltage

* Nora Dedicated LED housings are cULus listed for use only with Nora LED Retrofits.

Retrofit: A medium base screw-socket adapter is included for retrofitting into existing housings. Medium base sockets may require removal, dependent on trim and housing height. A GU24 socket adapter is also available, ordered separately (NRA-212SM).

Accessories: Luminaires can accommodate (1) hex louver and (1) translucent deco collar or opaque snoot, no accessory holder is required, see page 2.

LABELS AND LISTINGS

- cULus classified for Wet Locations
- RoHS compliant
- [5-Year Limited Warranty](#)
- Certified to the high efficacy requirements of California Title 24 JA8-2025
- Patent Pending



Type

Project

Catalog No.

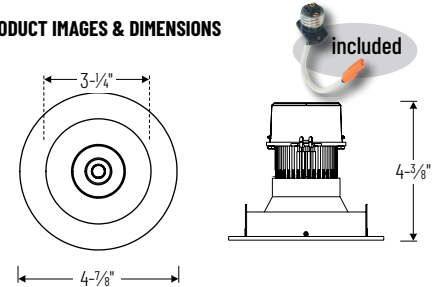
Notes

Performance Data

Part Number	Lumens	CCT	Optic
NPR-4RNDC40XMPW	1183lm	4000K	Spot
NPR-4RNDC40XMPW	1189lm	4000K	Narrow
NPR-4RNDC40XMPW	1185lm	4000K	Flood

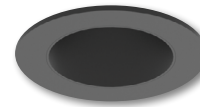
Delivered lumens will vary depending on CCT, optic and finish

PRODUCT IMAGES & DIMENSIONS



NPR-4RNDC

Round Reflector with Round Aperture
Non-Adjustable



BB

Black Reflector
Black Flange



BW

Black Reflector
Warm White Flange



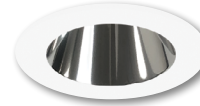
BZ

Bronze Reflector
Bronze Flange



CHMPW

Champagne Haze Reflector
Bright White Flange



CMPW

Specular Clear Reflector
Bright White Flange



HW

Haze Reflector
Warm White Flange



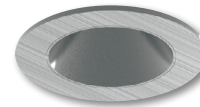
HZMPW

Haze Reflector
Bright White Flange



MPW

Bright White Reflector
Bright White Flange



NN

Natural Metal Reflector
Natural Metal Flange



WW

Warm White Reflector
Warm White Flange

4" Pearl 120V LED Round Retrofit Reflector with Round Aperture

Color Temperature	Finish
NPR-4RNDC27X = 2700K	BB = Black
NPR-4RNDC30X = 3000K	BW = Black Reflector / Warm White Flange
NPR-4RNDC35X = 3500K	BZ = Bronze Reflector/ Bronze
NPR-4RNDC40X = 4000K	CHMPW = Champagne Haze Reflector/ Bright White Flange
NPR-4RNDCDX = Comfort Dim	CMPW = Specular Clear Reflector/ Bright White Flange
	HW = Haze Reflector/ Warm White Flange
	HZMPW = Haze Reflector/ Bright White Flange
	MPW = Bright White
	NN = Natural Metal
	WW = Warm White

Example: **NPR-4RNDC40XMPW** = 4" Pearl 120V LED Round Retrofit Reflector with Round Aperture, 4000K, Bright White finish

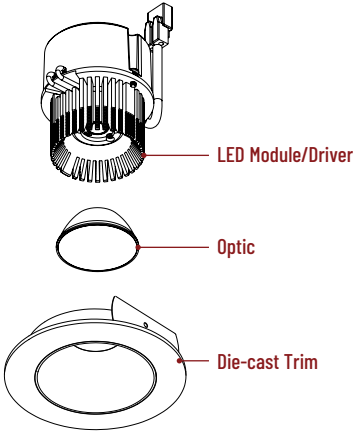
ACCESSORIES

4" Pearl 120V LED Round Retrofit Reflector with Round Aperture

Type
Project
Catalog No.
Notes

FIELD CHANGEABLE OPTICS

Pearl luminaires include spot, narrow flood and flood optics. Optics can be changed in the field by removing LED module from die-cast trim. Optional frosted and TIR optics are also available.
Note: Premium TIR optics are not compatible with Comfort Dim LED modules.



Frosted Optics

NIO-REFL38FR	60° Optic
NIO-REFL60FR	73° Optic

Replaces optics that are included with each LED module.



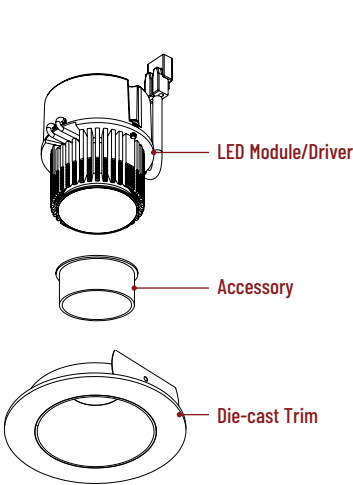
Premium TIR Optics

NIO-REFLTIR15	22° Optic
NIO-REFLTIR25	26° Optic

Premium TIR (total internal reflection) optics create optimal spot and narrow flood beam spread.
Not compatible with Comfort Dim (CDX) LED module

ACCESSORIES

Pearl accessories can be added at any point in the design process. Accessories easily install between LED module and die-cast trim. Luminaire will accommodate (1) hex louver and (1) collar accessory, no accessory holder required.



Translucent Decorative Collar

NIO-AS14(color)	5/8" length
NIO-AS19(color)	3/4" length
NIO-AS26(color)	1" length
Color: AM (amber), BLU (blue), FR (frosted), R (red)	

Translucent collars color the aperture with the specified color while producing white general light. Collars are available in different lengths. Use to add interest, create a theme, match a theme or define a space.



Opaque Collar Snoot

NIO-AS14WH	5/8" length / warm white finish
NIO-AS19MPW	3/4" length / bright white finish
NIO-AS19WH	3/4" length / warm white finish
NIO-AS26WH	1" length / warm white finish

Opaque snoot greatly reduces aperture brightness while preserving light output.



Hex Cell Louver

NIO-HC	Black
Hex cell louver subtly reduces aperture brightness by reducing light output by about 20%.	
Hex cell louver is <u>not</u> compatible with TIR optics.	

PHOTOMETRICS

4" Pearl 120V LED Round Retrofit Reflector with Round Aperture

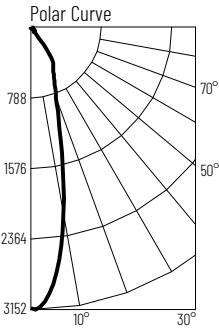
Type

Project

Catalog No.

Notes

Test Information
Test Number: NTR2757R1
Part Number: NPR-4RND40XMPW
Beam Spread: 26° Spot
Lumens: 1183lm
Wattage: 9.57W
Efficacy: 124pw
CCT / CRI: 4000K / 90 CRI
Spacing Criteria (0°-180°): 0.46
Spacing Criteria (90°-270°): 0.46

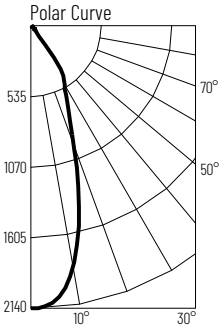


Illuminance at a Distance		
Distance from Luminaire	FC at Nadir	Beam Diameter
4'	196fc	1'-11"
6'	87.2fc	2'-10"
8'	49.1fc	3'-8"
10'	31.4fc	4'-8"
12'	21.8fc	5'-7"

Zonal Lumen Summary		
Zone	Lumens	% Luminaire
0-30	906	76.6
0-40	1089	92
0-60	1158	97.9
0-90	1183	100
90-180	0	0
0-180	1183	100

Candela Table	
Vertical Angles	Candela
0	3141
5	2880
15	1298
25	620
35	332
45	56

Test Information
Test Number: NTR2753R1
Part Number: NPR-4RND40XMPW
Beam Spread: 37° Narrow Flood
Lumens: 1189lm
Wattage: 9.57W
Efficacy: 124pw
CCT / CRI: 4000K / 90 CRI
Spacing Criteria (0°-180°): 0.62
Spacing Criteria (90°-270°): 0.62

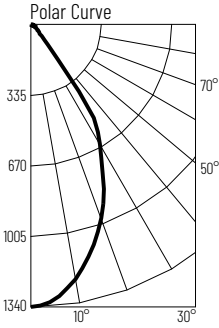


Illuminance at a Distance		
Distance from Luminaire	FC at Nadir	Beam Diameter
4'	134fc	2'-8"
6'	59.4fc	4'-1"
8'	33.4fc	5'-5"
10'	21.4fc	6'-10"
12'	14.9fc	8'-1"

Zonal Lumen Summary		
Zone	Lumens	% Luminaire
0-30	891	74.9
0-40	1084	91.2
0-60	1162	97.8
0-90	1189	100
90-180	0	0
0-180	1189	100

Candela Table	
Vertical Angles	Candela
0	2140
5	2091
15	1415
25	666
35	365
45	55

Test Information
Test Number: NTR2749R1
Part Number: NPR-4RND40XMPW
Beam Spread: 59° Flood
Lumens: 1185lm
Wattage: 9.57W
Efficacy: 124pw
CCT / CRI: 4000K / 90 CRI
Spacing Criteria (0°-180°): 0.88
Spacing Criteria (90°-270°): 0.88



Illuminance at a Distance		
Distance from Luminaire	FC at Nadir	Beam Diameter
4'	83.8fc	4'-6"
6'	37.2fc	6'-10"
8'	20.9fc	9'-1"
10'	13.4fc	11'-4"
12'	9.3fc	13'-7"

Zonal Lumen Summary		
Zone	Lumens	% Luminaire
0-30	806	68.1
0-40	1067	90
0-60	1155	97.5
0-90	1185	100
90-180	0	0
0-180	1185	100

Candela Table	
Vertical Angles	Candela
0	1340
5	1307
15	1111
25	818
35	463
45	69

Lumen Output Multipliers
Color Temperature: 2700K (0.89), 3000K (0.94), 3500K (0.98), 4000K (1.00)

Finish Multipliers
Finish: Black (0.89), Bronze (0.85), Champagne Haze (0.95), Specular Clear (1.04), Haze (0.95), Natural Metal (0.93), Bright White (1.00), Warm White (1.03)