

NEFLINTW-R4MPW

4" E-Series FLIN Round LED Downlight with Selectable CCT

Source: 10.5W  
Up to 950lm

PRODUCT DESCRIPTION

E-Series FLIN is a thin recessed LED designed for easy installation into new construction or remodel applications. Luminaires include a selectable color temperature switch located on the junction box of each luminaire with a quick connect that allows for easy disconnect and mounting in the ceiling.

FEATURES

- No housing required and includes junction box with class 2 driver
- Quick installation and cost savings
- Junction box includes kelvin temperature switch
- IC Air-Tight rated
- Field selectable color temperature
- Triac or ELV dimming
- cETLus Listed for Wet Locations
- 5-year limited warranty

SPECIFICATION

**Construction:** Die-cast aluminum luminaire with spring clips for easy installation. Gasket included for air-tight and wet location listing without additional caulking.

**Air Flow Restriction:** Luminaire has factory installed gasket to restrict airflow from room into ceiling plenum to <2CFM (cubic feet per minute) in accordance with ASTM E283 Air-Tight requirements.

**Lens:** Regressed lens with sharp baffle cuts reduces aperture brightness. Special polymer lens produces more usable light and lumens per watt.

**Junction Box:** Prewired junction box includes quick connect to LED fixtures for ease of installation. Junction box includes two 1/2" trade size and two 3/8" trade size knockouts and snap on cover. Maximum of 4 No. 12 AWG through branch circuit conductor suitable for 90°C permitted in box. [Fixture wire length: 5" and Junction box wire length: 9"]  
**Maximum length between luminaire and driver is 40'. For longer remote driver remote run length, consult factory.**

**Mounting:** No housing is required, two tensions steel spring clips secure luminaires to the ceiling. Luminaires accept ceiling thicknesses from 3/8" to 5/16". New construction frame-in kits are available, see accessories.

**Minimum clearance:** "IC" Insulated ceiling housings are direct contact rated; no minimum clearance is required.

ELECTRICAL

**Voltage:** 120VAC or 120-277VAC  
**Lumens / Wattage:** Up to 950lm / 10.5W  
**Color Temperature:** Selectable CCT (2700K / 3000K / 3500K / 4000K / 5000K)  
**Color Rendering Index:** 90+ CRI  
**Beam Spread:** 115° Wide Flood  
**Operating Temperature:** 0°C to 35°C  
**Lifetime:** 50,000 hours @ L70  
**Dimming:** Dimmable down to 10% with Triac or ELV dimmer [Click Here](#) or check complete dimmer list at [www.NoraLighting.com](#) in the "Compatibility" page under "Resources" tab

OPTIONAL ACCESSORIES

**NEFLINTW-4OR-MPW:** Oversize Ring  
**NEFLINTW-EW-4:** 4' Quick Connect Linkable Cable  
**NEFLINTW-EW-20:** 20' Quick Connect Linkable Cable  
**NF-R246:** Universal New Construction Frame-In  
**NFC-R430:** New Construction Frame-In with Collar

LABELS AND LISTINGS

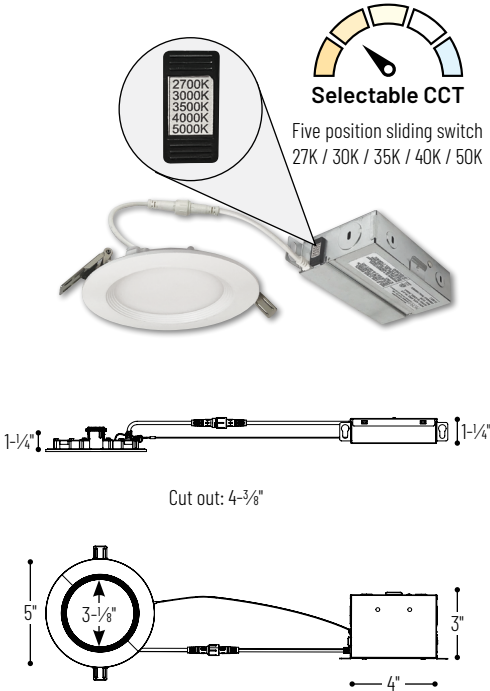
- cETLus Listed for Wet location
- Certified to the high efficacy requirements of California Title 24 JA8-2022
- [5-Year Limited Warranty](#)
- FCC Compliant



Type
Project
Catalog No.
Notes

Performance Data		
Part Number	Lumens	CCT
NEFLINTW-R4MPW	861lm	2700K
NEFLINTW-R4MPW	894lm	3000K
NEFLINTW-R4MPW	943lm	3500K
NEFLINTW-R4MPW	964lm	4000K
NEFLINTW-R4MPW	966lm	5000K

PRODUCT IMAGES AND DIMENSIONS



4" E-Series FLIN LED Round Downlight with Selectable CCT

Input Voltage
NEFLINTW-R4MPW = 120V input
NEFLINTW-R4MPWLE4 = 120-277V input

Optional Accessories

Description
NEFLINTW-4OR-MPW = Oversize Ring
NEFLINTW-EW-4 = 4' Quick Connect Extension Cable
NEFLINTW-EW-20 = 20' Quick Connect Extension Cable
NF-R246 = Universal New Construction Frame-In
NFC-R430 = New Construction Frame-In with Collar

Example: NEFLINTW-R4MPW = 4" Round E-Series FLIN LED Downlight, Selectable CCT (2700K / 3000K / 3500K / 4000K / 5000K), Matte Powder White finish, 120V input

**NEFLINTW-R4**  
4" Round E-Series FLIN LED Downlight Accessories

Type	
Project	
Catalog No.	
Notes	



Oversize Ring for Round

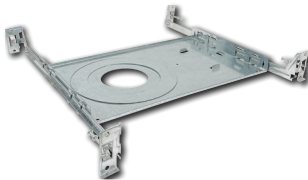
**NEFLINTW-40R-MPW**  
Oversize ring covers ceiling cut-outs up to 5-1/4"



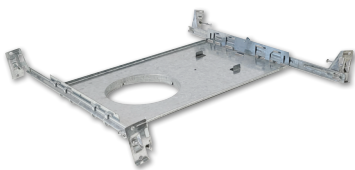
Quick Connect Extension Cables

**NEFLINTW-EW-4** 4'  
**NEFLINTW-EW-20** 20'

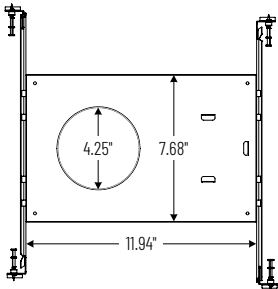
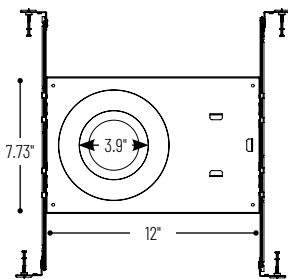
Use to extend the length between luminaire and driver box. Can be connected together to create custom lengths. Maximum length between luminaire and driver is 40'. For longer remote driver remote run length, consult factory.



Universal New Construction Frame-In  
**NF-R246**  
Universal new construction frame-in can be used to assist installing can-less recessed downlighting.



New Construction Frame-In with Collar  
**NFC-R430**  
New construction frame-in can be used to assist installing can-less recessed downlighting.



# PHOTOMETRICS

## 4" E-Series FLIN Round LED Downlight with Selectable CCT

### Type

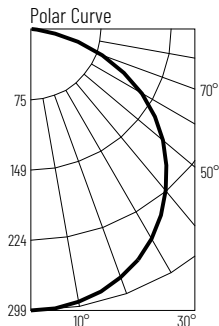
### Project

### Catalog No.

### Notes

#### Test Information

Test Number: NTR1918R1  
Part Number: NEFLINTW-R4MPW  
Beam Spread: 115° Wide Flood  
Lumens: 861lm  
Wattage: 10.12W  
Efficacy: 85lpw  
CCT / CRI: 2700K / 90 CRI  
Spacing Criteria (0°-180°): 1.28  
Spacing Criteria (90°-270°): 1.28



#### Illuminance at a Distance

Distance from Luminaire	FC at Nadir	Beam Diameter
4'	18.7fc	12"-7"
6'	8.3fc	18"-10"
8'	4.7fc	25"-1"
10'	3fc	31"-5"
12'	2.1fc	37"-8"

#### Zonal Lumen Summary

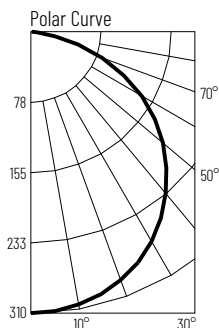
Zone	Lumens	% Luminaire
0-30	234	27.1
0-40	384	44.6
0-60	685	79.5
0-90	861	100
90-180	0	0
0-180	861	100

#### Candela Table

Vertical Angles	Candela
0	299
5	298
15	288
25	270
35	241
45	204

#### Test Information

Test Number: NTR1919R1  
Part Number: NEFLINTW-R4MPW  
Beam Spread: 115° Wide Flood  
Lumens: 894lm  
Wattage: 9.97W  
Efficacy: 90lpw  
CCT / CRI: 3000K / 90 CRI  
Spacing Criteria (0°-180°): 1.28  
Spacing Criteria (90°-270°): 1.28



#### Illuminance at a Distance

Distance from Luminaire	FC at Nadir	Beam Diameter
4'	19.4fc	12"-6"
6'	8.6fc	18"-10"
8'	4.9fc	25"-1"
10'	3.1fc	31"-5"
12'	2.2fc	37"-7"

#### Zonal Lumen Summary

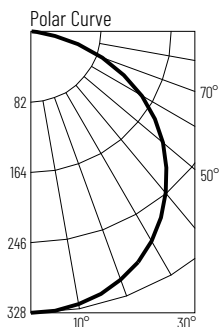
Zone	Lumens	% Luminaire
0-30	243	27.1
0-40	399	44.6
0-60	711	79.6
0-90	894	100
90-180	0	0
0-180	894	100

#### Candela Table

Vertical Angles	Candela
0	310
5	309
15	300
25	280
35	251
45	212

#### Test Information

Test Number: NTR1920R1  
Part Number: NEFLINTW-R4MPW  
Beam Spread: 115° Wide Flood  
Lumens: 943lm  
Wattage: 9.81W  
Efficacy: 96lpw  
CCT / CRI: 3500K / 90 CRI  
Spacing Criteria (0°-180°): 1.28  
Spacing Criteria (90°-270°): 1.28



#### Illuminance at a Distance

Distance from Luminaire	FC at Nadir	Beam Diameter
4'	20.5fc	12"-7"
6'	9.1fc	18"-10"
8'	5.1fc	25"-1"
10'	3.3fc	31"-5"
12'	2.3fc	37"-8"

#### Zonal Lumen Summary

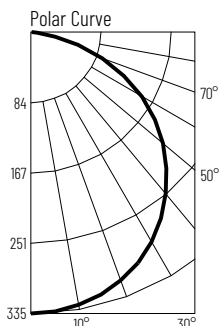
Zone	Lumens	% Luminaire
0-30	256	27.1
0-40	421	44.6
0-60	751	79.6
0-90	943	100
90-180	0	0
0-180	943	100

#### Candela Table

Vertical Angles	Candela
0	328
5	327
15	317
25	296
35	264
45	224

#### Test Information

Test Number: NTR1921R1  
Part Number: NEFLINTW-R4MPW  
Beam Spread: 115° Wide Flood  
Lumens: 964lm  
Wattage: 9.94W  
Efficacy: 97lpw  
CCT / CRI: 4000K / 90 CRI  
Spacing Criteria (0°-180°): 1.28  
Spacing Criteria (90°-270°): 1.28



#### Illuminance at a Distance

Distance from Luminaire	FC at Nadir	Beam Diameter
4'	20.9fc	12"-6"
6'	9.3fc	18"-10"
8'	5.2fc	25"-1"
10'	3.4fc	31"-5"
12'	2.3fc	37"-7"

#### Zonal Lumen Summary

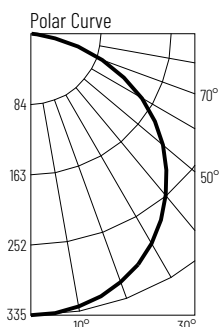
Zone	Lumens	% Luminaire
0-30	261	27.1
0-40	430	44.6
0-60	766	79.5
0-90	964	100
90-180	0	0
0-180	964	100

#### Candela Table

Vertical Angles	Candela
0	335
5	333
15	323
25	302
35	270
45	229

#### Test Information

Test Number: NTR1922R1  
Part Number: NEFLINTW-R4MPW  
Beam Spread: 115° Wide Flood  
Lumens: 966lm  
Wattage: 10.16W  
Efficacy: 95lpw  
CCT / CRI: 5000K / 90 CRI  
Spacing Criteria (0°-180°): 1.28  
Spacing Criteria (90°-270°): 1.28



#### Illuminance at a Distance

Distance from Luminaire	FC at Nadir	Beam Diameter
4'	21fc	12"-6"
6'	9.3fc	18"-10"
8'	5.2fc	25"-1"
10'	3.4fc	31"-5"
12'	2.3fc	37"-7"

#### Zonal Lumen Summary

Zone	Lumens	% Luminaire
0-30	216	22.4
0-40	361	37.4
0-60	746	77.2
0-90	966	100
90-180	0	0
0-180	966	100

#### Candela Table

Vertical Angles	Candela
0	335
5	334
15	323
25	302
35	270
45	229