

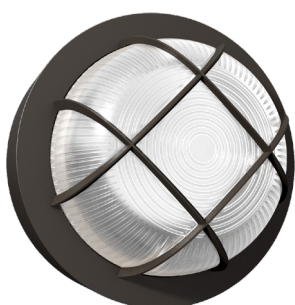


Bulk-Line: Wall Pack

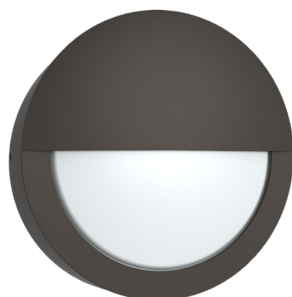
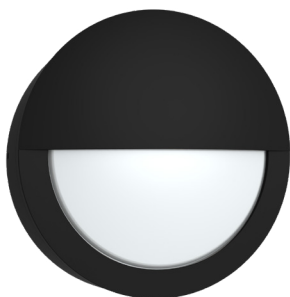
3-CCT + Photocell Selectable



LED-WPBH-3P20-TRI



LED-WPBH-RDCH-3P15-TRI



LED-WPBH-RDSC-3P15-TRI

Detail Specification:

- Finish: Bronze, Black, White
- IP Rating: Wet Location
- Impact Rating: IK08
- Beam Angle: 100°
- BUG: B1-U3-G2
- Chip: SMD 2835, R9 >50, CRI >80
- Operating Temperature: -40° - 113° F
- Lens: Ribbed acrylic
- Average life (L70) of 70,000 hours

Applications:

- Walkways & Pathways
- Parking Lots
- Hospitality, Multi-Family
- Outdoor Corridors
- Residential, Commercial and Industrial

Product Information:

- Sturdy die-cast aluminum housing finished with corrosion free powder coat
- Instant-On to full brightness

Driver Options:

- UNV: 120-277V 0-10V Dimmable
- Built in 6Kv Surge Protector
- THD: <20% (+/-5% tolerance), PF >0.9, 50/60Hz

Mounting & Installation:

- Backplate mounts to j-box

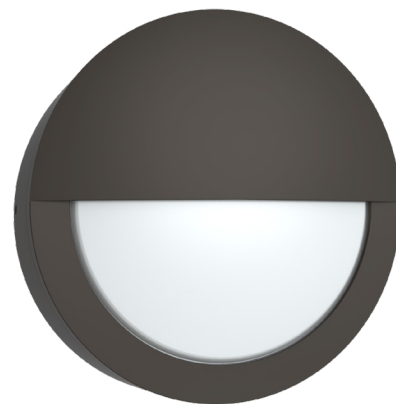
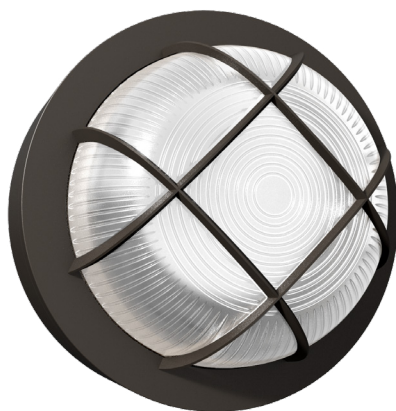
Certifications:

- ETL Listed for USA and CA
- Approved for CA T24
- 5 Year Limited Warranty
- FCC CFR 47, GCC Part 15, Subpart B:2017

Series	Finish	Photocell
LED-WPBH-3P20-TRI 20/16/12w • 1700/1360/1020lm	BZ Bronze	- PC Selectable Photocell
LED-WPBH-RDCH-3P15-TRI 15/12/9w • 1350/1080/810lm	BL Black	
LED-WPBH-RDSC-3P15-TRI 15/12/9w • 1350/1080/810lm	WH White	

Specs and model numbers are subject to change with or without notice.

FEATURES



ON/OFF
Photocell



Wattage & 3-CCT
Selectable



ON/OFF
Photocell



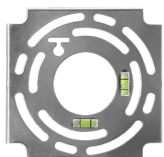
Wattage & 3-CCT
Selectable



ON/OFF
Photocell



Wattage & 3-CCT
Selectable



Wall Plate with
Horizontal/Vertical
Vial

- Polycarbonate Lens and Mirror Reflector
- Die-Cast Aluminum Housing

DIMENSIONS

