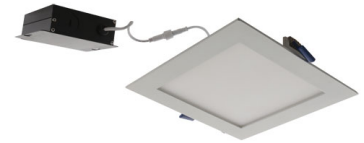


# 6" Ultra Slim LED Square Panel Light - ERT661



This 6" ultra slim panel light designed for quick and easy installation without a housing for both new construction and remodel applications. This IC-rated fixture can be installed indoor or outdoor and delivers a smooth light output of 700 lumens, in 3000K or 4000K.

## Features

- IC Airtight for use with direct contact to insulation.
- Designed to fit in plenums as shallow as 2".
- Eliminates the need for housing.
- New Construction application requires mounting plate or frame.
- Remodel applications require no additional accessories.
- Wet Location allows for use indoors or outdoors.
- CA Title 24 Compliant and ENERGY STAR Certified.
- Includes driver and jbox.

## Specifications

<b>Wattage</b>	12W
<b>Lumens</b>	750 lm - 800 lm
<b>Voltage</b>	120V
<b>Color Temp.</b>	3000K - 4000K
<b>Dimmable</b>	Triac/ELV
<b>Lamp Type</b>	LED
<b>CRI</b>	90+
<b>Wet Location</b>	Listed

## Options



White

Nickel

Bronze

## Technical Details

**Optics:** Polycarbonate lens diffuses light evenly throughout space with no LED pixelation.

**Construction:** IC rated driver and fixture are tested and approved for direct contact with insulation. Aluminum die-cast trim ring with durable powdercoat finish preventing rust and paint cracking. Plenum rated cable connector to connect from module to remote driver box. Isolated driver integrated inside aluminum remote box with two 7/8" knockouts with slots for pryout.

**Installation:** Designed for super shallow ceiling plenums without any housing. High strength steel spring clip for easy installation. Hole cut out template provided for accurate hole size for proper trim installation. Maximum hole size should not exceed 6 1/4" for this product. Suitable installation for T-grid and drop ceiling applications.

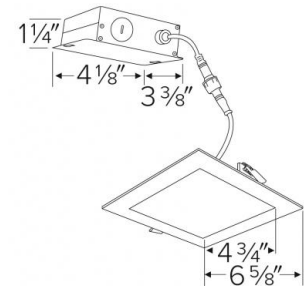
**Electrical:** Driver connects directly to 120V power supply. Standard input wattage is 12W, 58 lumens per watt. Replaces 70W incandescent.

**Dimmability:** Works with 120V Triac and ELV type dimmers. Dims down to 10%. For full list of dimmers, refer to the ELM System Dimmer Compatibility List.

**Listings:** ETL Listed for Wet Locations. ENERGY STAR® Certified. IC-Rated for direct contact with insulation. Air Tight certified in accordance with ASTM E283-2004. California Title 24 compliant (JA8-2016-E)

**Warranty:** 5-year limited warranty.

## Dimensions



## Product Numbers

Item	Lamp type	Lumens	CCT	Watts	Voltage	Dimming	Finish
<b>ERT66130W</b>	LED	750 lm	3000K	12W	120V	Triac/ELV	White
<b>ERT66130N</b>	LED	750 lm	3000K	12W	120V	Triac/ELV	Nickel
<b>ERT66130BZ</b>	LED	750 lm	3000K	12W	120V	Triac/ELV	Bronze
<b>ERT66140W</b>	LED	800 lm	4000K	12W	120V	Triac/ELV	White
<b>ERT66140N</b>	LED	800 lm	4000K	12W	120V	Triac/ELV	Nickel
<b>ERT66140BZ</b>	LED	800 lm	4000K	12W	120V	Triac/ELV	Bronze

## Product Number Builder Example: ERT66130W

6" Square Slim Panel 700lm	Color Temp.	Finish
<b>ERT661</b>		
	30 3000K 40 4000K	W White N Nickel BZ Bronze