

# Oak™ Architectural R60 ICA New Construction Housing for Trimless Downlights



R60 Specialty housing for spray in insulation. To be used with Oak™ Architectural LED Trimless Downlights only.

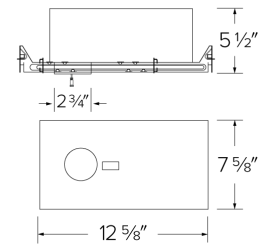
## Features

- R60 Housing designed for speciality spray in insulation
- Housing to be used with Oak™ Architectural LED Trimless Downlights only (E1AK61)
- UL Listed for direct contact with insulation
- Housing specified for 900 lumens (8W)
- Driver specified for 120V (Triac/ELV) or 120/277V (0-10V/Triac/ELV)
- Damp Location Listed, Wet Location with Wet Location Light Engines
- JA8-2022-E, UL Listed

## Specifications

<b>Wattage</b>	8W
<b>Lumens</b>	900 lm
<b>Voltage</b>	120/277V or 120V
<b>Dimmable</b>	Triac/ELV, 0-10V/Triac/ELV

## Dimensions



## Technical Details

**Construction:** IC rated for direct contact with insulation. For use in IC and Non-IC conditions.

**Installation:** Designed for ceiling plenums where 2x6 joists or taller are used. High strength hanger bars can easily be nailed to joists. Suitable for T-grid and drop ceiling applications. See installation sheet for detailed information.

**Hanger Bars:** Pre Installed hanger bars with True Nail easy installation in regular lumber, engineered lumber, and Laminated Beams. Integral T-bar slots for easy installation in T-Bars. Spans up 24" and can be repositioned 90°. Score lines allow for tool-free hanger bar size reduction. Integral leveling flange allows for single-person installation while easily aligning the housings with the joists.

**Electrical:** Driver is rated for 120V or 120/277V input. High Efficiency driver with a power factor > 0.95.

**Dimmability:** Option Triac/ELV dimming or 0-10V/Triac/ELV dimming can be specified. Can be specified with Lutron drivers.

**Listings:** cUL Listed. UL Listed for Damp Location and for Wet Location with WET location Light Engines. UL Listed for Direct Contact with Insulation and Combustible Material.

## Product Numbers

Item	Lumens	Watts	Voltage	Dimming
<b>E1TRL08AJIC</b>	900 lm	8W	120V	Triac/ELV
<b>E1TRL08AJICDX</b>	900 lm	8W	120/277V	0-10V/Triac/ELV

## Product Number Builder Example: E1TRL08AJIC

R60 ICA New Construction Housing

Lumens

Dimming

**E1TRL**

**08** 900 lm

**AJIC** Triac/ELV

**AJICDX** 0-10V/Triac/ELV

# Compatible Products

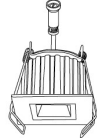


For use with 1" Oak™ Architectural IC Airtight New Construction Housings

## 1" Oak™ Architectural Downlights Use with E1DWN08AJIC (2" Cutout)



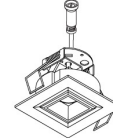
**E1AK02 Series**  
**Round Downlight**  
Finishes:  
(W, B, BZ, H, BB)



**E1AK12 Series**  
**Square Downlight**  
Finishes:  
(W, B, BZ, H, BB)

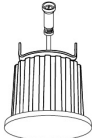


**E1AK32 Series**  
**Round Gimbal**  
Finishes:  
(W, B)



**E1AK22 Series**  
**Square Pull Down**  
Finishes:  
(W, B)

## 1" Oak™ Architectural Trimless Use with E1TRL08AJIC (2 3/4" Cutout)

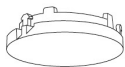


**E1AK61 Series**  
**Round Trimless**  
Finishes:  
(W, B, BZ)

### PRODUCT NUMBER BUILDER

Oak™ Architectural	Style	Beam Angle	Color Temperature	Finish
<b>E1AK</b>				
	<b>02</b> Round Downlight	<b>F</b> 38° (Standard)	<b>27</b> 2700K	<b>W</b> All White
	<b>12</b> Square Downlight	<b>NF</b> 28°	<b>30</b> 3000K	<b>B</b> Black
	<b>32</b> Round Gimbal	<b>WF</b> 50°	<b>35</b> 3500K	<b>BZ</b> All Bronze
	<b>22</b> Square Pull Down		<b>40</b> 4000K	<b>H</b> Haze w/White Ring
			<b>SD</b> Sunset	<b>BB</b> All Black

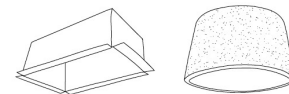
## 1" Oak™ Accessories



Trimless Rings



Lens & Optics



Fire Rated Products

CAT NO.	SPECIFICATIONS	CAT NO.	SPECIFICATIONS	CAT NO.	SPECIFICATIONS
RM1TLW	All White	EP713C	28° Lens	FIREENCL	Standard - 9" H x 20 3/8" L x 14 3/8" W
RM1TLB	All Black	EP714C	38° Lens	FIREENCL-S	Shallow - 7 1/4" H x 16" L x 14 3/8" W
RM1TLBZ	All Bronze	EP715C	50° Lens		1-Hr Fire Enclosure for Recessed Fixtures
		L60	Frosted Diffuser (For E1AK02, E1AK12, & E1AK32)	FIRECVR	9 3/4" H x 17" O.D. x 13" I.D.
		L61	Hex Louver (For E1AK02, E1AK12, & E1AK32)		2-Hr Fire Cover for Recessed Fixtures