

Pex™ 3" Adjustable Trimless Reflector

Pex™ Precision die-cast trims with twist-on system for easy tool-free installation



Features

- 3" Adjustable Trimless Reflector (ELK315)
- 3" Trimless Spackle Frame Ordered Separately (EL3SFR)
- 3" Knife Edge Wood Ceiling Trim Ordered Separately (EL3WCRW, EL3WCRB)
- 35° Adjustability
- Convenient twist-on design for easy installation
- Damp Location Rated
- Lamp: Koto™ LED Module and Canless Koto™ LED Module

Technical Details

Installation: Twist-lock design allows for easy mounting onto the Koto™ LED Module.

Lamp: Koto™ LED Module and Canless Koto™ LED Module.

Listings: Damp Location Rated.

Options



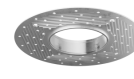
ELK315 - White Reflector



ELK315H - Haze Reflector



ELK315B - Black Reflector



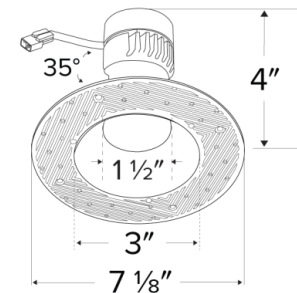
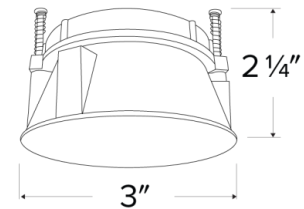
EL3SFR - Spackle Frame



EL3WCRW - White Adaptor with Mounting Clips



EL3WCRB - Black Adaptor with Mounting Clips



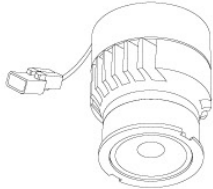
Product Numbers

Item	Description	Finish
ELK315W	3" Round Adjustable Trimless Reflector	All White
ELK315H	3" Round Adjustable Trimless Reflector	All Haze
ELK315B	3" Round Adjustable Trimless Reflector	All Black
EL35FR	3" Round Trimless Spackle Frame	

Compatible Products

For use with 3" Koto™ Twist-&-Lock Trimless

Koto™ LED Module



Koto™ LED Module
ELK07, ELK09, & ELK11

PRODUCT NUMBER BUILDER			
Koto™ LED Module	Lumens	Color Temperature	Beam Angle
ELK			
07	750 lm	27 2700K	(blank) 38° lens (Standard)
09	950 lm	30 3000K	-S 18° lens
11	1150 lm	35 3500K	-N 25° lens
		40 4000K	-W 60° lens
		SD Sunset Dimming (For ELK09 & ELK11)	-FC 18° - 50° Adjustable (ELK07 Only)

ACCESSORIES



Lens

- EP731C 18° Lens
 - EP732C 25° Lens
 - EP733C 38° Lens
 - EP734C 60° Lens
- EP732C, EP733C, EP734C Included



Snoot

- L50W White
- L50B Black



Secondary Optics

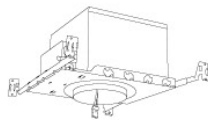
- L45 Hex Louver
- L46 Linear Lens
- L47 Spread Louver
- L49 Frosted Lens
- L51 Color Shifter

Koto™ LED Module with 5-CCT Switch

Product Number

ELK08CT5	825 lm
ELK10CT5	1000 lm

3" Koto™ Dedicated LED ICA Housings



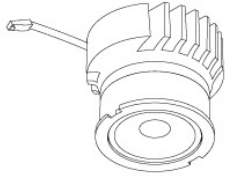
3" ICA Maximum Adjustability Housing
New Construction

CAT NO.	SPECIFICATIONS
EL386ICA	Maximum Adjustability

Compatible Products

For use with 3" Koto™ Twist-&-Lock Trimless

Koto™ Architectural LED Light Engine



Koto™ LED Light Engine
ELK19 - ELK21

PRODUCT NUMBER BUILDER			
Koto™ LED Light Engine	Lumens	Color Temperature	Beam Angle
ELK			
19	750 - 850 lm	27D 2700K	(blank) 38° lens (Standard)
21	1100 - 1500lm	30D 3000K	-S 18° lens
		35D 3500K	-N 25° lens
		40D 4000K	-W 60° lens
		SD Sunset Dimming (ELK19 Only)	-FC 18° - 50° Adjustable (ELK21 Only)

ACCESSORIES

Lens

EP731C 18° Lens
EP732C 25° Lens
EP733C 38° Lens
EP734C 60° Lens

*EP732C, EP733C, EP734C Included

Secondary Optics

L45 Hex Louver
L46 Linear Lens
L47 Spread Louver
L49 Frosted Lens
L51 Color Shifter

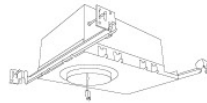
Shoot

L50W White
L50B Black

3" Koto™ Architectural Recessed Housings



3" High Lumen Maximum Adjustability ICA Housing
1500 lm (18.9W) w/ELK21 Series Module
Not for use with ELK19 Series Module
New Construction



3" Shallow Maximum Adjustability ICA Housing
850 lm (14.7W) w/ELK19 Series Module
1100 lm (14.7W) w/ELK21 Series Module
New Construction

CAT NO.	SPECIFICATIONS
E3LK53ICA	15.7W, 120V, Triac/ELV
E3LK54ICAD	15.7W, 120/277V, 0-10V/Triac/ELV
E3LK54ICAD-L	15.7W, 120/277V, 0-10V/Triac/ELV (Lutron 1% dimming)
E3LK54ICADAL	15.7W, 120/277V, DALI 2
E3LK84ICA	18.9W, 120V, Triac/ELV
E3LK85ICAD	18.9W, 120/277V, 0-10V/Triac/ELV
E3LK85ICAD-L	18.9W, 120/277V, 0-10V/Triac/ELV (Lutron 1% dimming)
E3LK85ICADAL	18.9W, 120/277V, DALI 2

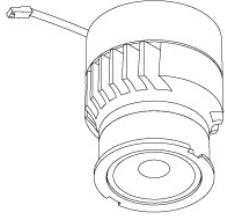
CAT NO.	SPECIFICATIONS
E3LK76ICA	120V, Triac/ELV
E3LK77ICAD	120/277V, 0-10V/Triac/ELV
E3LK77ICADAL	120/277V, DALI 2

Compatible Products



For use with 3" Koto™ Twist-On Trims

Koto™ 24V DC LED Light Engine



24V DC Koto™ LED Light Engine

PRODUCT NUMBER BUILDER			
Koto™ LED Light Engine	Lumens	Color Temperature	Voltage
ELK			

08 800 lm 27 2700K -24 24V DC
30 3000K

**Standard module includes 38° installed with 25° & 60° field changeable lenses.*

ACCESSORIES



Lens

Snoot

- EP731C 18° Lens L50W White
 - EP732C 25° Lens L50B Black
 - EP733C 38° Lens
 - EP734C 60° Lens
- *EP732C, EP733C, EP734C Included with standard module



Secondary Optics

- L45 Hex Louver L57 White Hex Louver
- L46 Linear Lens L52 Blue Lens
- L47 Spread Louver L53 Pink Shifter
- L49 Frosted Lens
- L51 Color Shifter

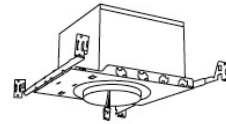
3" Koto™ Dedicated LED ICA Housings (24V DC Input)



24V DC 2-Hour Fire Rated 3" ICA Housing
New Construction

CAT NO.	SPECIFICATIONS
E24V39FICA	7 1/2" Height - Sound Rated

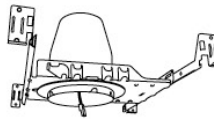
*Requires 24V DC Transformer



24V DC 3" ICA Maximum Adjustability Housing
New Construction

CAT NO.	SPECIFICATIONS
E24V386ICA	Maximum Adjustability

*Requires 24V DC Transformer



24V DC 3" ICA Housing
New Construction

CAT NO.	SPECIFICATIONS
E24V390ICA	

*Requires 24V DC Transformer



24V DC 3" ICA Housing
Remodel

CAT NO.	SPECIFICATIONS
E24V390RICA	

*Requires 24V DC Transformer