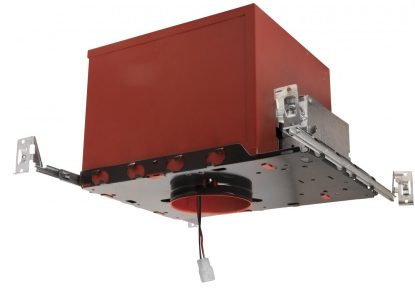


4" New Construction 2-Hour Fire Rated Housing w/Driver - E4FH



2-Hour Fire Rated for use with Cedar System LED Light Engines.

Features

- UL Listed for 2-Hour Fire Resistance to meet and exceed strict fire safety codes.
- Integrated Non-combustible insulation acts as a sound barrier minimizing sound transfer between floors.
- Optional 90 minutes, 120/277 VAC, 60Hz, Emergency Backup.
- ENERGY STAR® Certified.
- Flicker-Free Dimming. Special order Lutron Hi-lume-Series Drivers.
- USA designed and assembled.
- Limited 5 year warranty.
- For use with ELCO Cedar™ System 4" LED Light Engines.

Technical Details

Construction:

- Double wall IC rated for direct contact with insulation. For use in IC and non-IC conditions. Up to 1250 lumens.
- Housing adjusts in frame to accommodate up to 1 1/2" ceiling thickness.
- Airtight housing with gasket to restrict airflow in accordance with ASTM E-283 air-tight requirements.

Installation:

- Designed for ceiling plenums where 2x8 joists or taller are used.
- High strength hanger bars can easily be nailed to joists.
- Suitable for T-grid and drop ceiling applications.
- See installation sheet for detailed information.

Junction Box: Positioned to accommodate straight conduit runs. Two 3/4" knockouts, Seven 1/2" trade size conduit knockouts, One 3/8" knockout. Four Pry-out knockout slots for easy romex installation.

Hanger Bars: Pre Installed hanger bars with True Nail easy installation in regular lumber, engineered lumber, and Laminated Beams. Integral T-bar slots for easy installation in T-Bars. Spans up 24" and can be repositioned 90°. Score lines allow for tool-free hanger bar size reduction. Integral leveling flange allows for single-person installation while easily aligning the housings with the joists.

Electrical:

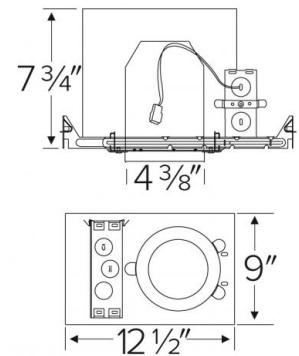
- Driver is rated for 120V and 277V input (120/277V).
- High Efficiency driver with a power factor > 0.95.

Dimmability:

- 3 in 1 dimming: Triac, ELV and 0-10V dimming in one driver.
- 0-10V dimming down to 1% with compatible dimmer.
- Can be specified with Lutron drivers for specific applications.
- For full list of dimmers refer to the Dimmer Compatibility List.

Listings: UL Listed for Damp Location and for Wet Location with select trims. UL Listed for Direct Contact with Insulation and Combustible Material. UL Listed for Feed Through.

Dimensions



Product Numbers

Item	Lumens	Voltage	Dimming
E4FH08ICA	850 lm	120V	Triac/ELV
E4FH08ICAD	850 lm	120/277V	Triac/ELV/0-10V
E4FH08ICASD	850 lm	120/277V	Sunset
E4FH08ICAL	850 lm	120/277V	Lutron EcoSystem
E4FH12ICA	1250 lm	120V	Triac/ELV
E4FH12ICAD	1250 lm	120/277V	Triac/ELV/0-10V
E4FH12ICASD	1250 lm	120/277V	Sunset
E4FH12ICAL	1250 lm	120/277V	Lutron EcoSystem
E4FH16ICA	1600 lm	120V	Triac/ELV
E4FH16ICAD	1600 lm	120/277V	Triac/ELV/0-10V
E4FH16ICASD	1600 lm	120/277V	Sunset
E4FH16ICAL	1600 lm	120/277V	Lutron EcoSystem

Product Number Builder

Example: **E4FH08ICA**

ELCO Cedar 4" Fire Housing	Lumens	IC Airtight	Dimming	Optional
E4FH	<input type="text"/>	<input type="text"/>	<input type="text"/>	<input type="text"/>
	08 850 lm 12 1250 lm 16 1600 lm	ICA ICA	(Blank) 120V Triac/ELV D 120/277V Triac/ELV/0-10V SD Sunset L Lutron EcoSystem	No EM EM1 Emer. Backup up to 700 lm EM2 Emer. Backup to 1100 lm