

SPECIFICATION SHEET

PRODUCT # : CL-523-BK

• Directional Lights

• Machined Aluminum

Fixture Specifications:

Housing: Corrosion resistant machined aluminum.

Finish: **BK- Black.** Smooth surface (no texture) polyester UV powder coated.
Also available in BZ- Bronze

Lens: Clear, tempered, and heat resistant glass.

Socket: Top grade fixed ceramic bi-pin socket, with lamp retention clip to securely hold lamp in place.

Lamp: 12V, MR-16 LED
Available in 3.5W, 5W, 6W or without lamp.
See lamp guide, below for more information.

Wiring: Fixture is prewired with a 3ft 18-2 SPT1-W direct burial cord and underground connectors.

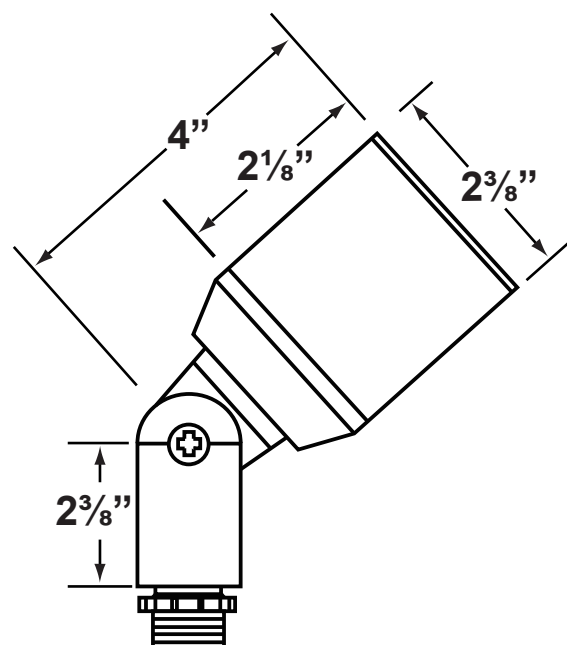
Gasket: Silicone double gasket for water tight sealing.

Knuckle: Adjustable machined aluminum knuckle with Stainless Steel Philips screw and ½" NPT threaded male hub

Mounting Spike: 8½" slotted black ABS spike with ½" NPT threaded male hub.

Electrical Notes: A remote 12V transformer is required. Options are available from Corona Lighting.
Voltage range for LED lamps are 9V-17V.
Proper grease/lubricant is suggested on threaded parts during installation process.

Warranty: Ten (10) year warranty on fixture housing against manufacturer's defects.



AVAILABLE LED LAMPS (Corona LED lamps have a five (5) year limited warranty against manufacturer's defects)

LAMP NUMBER	WATTS	BEAM		COLOR & TEMP.	RATED HOURS	HALOGEN EQUIVALENT
		SPREAD	LUMEN			
L-ED16-3W-SP	3.5	15° Spot	270	2700K	50,000	25 Watt
L-ED16-3W-FL	3.5	45° Flood	270	2700K	50,000	25 Watt
L-ED16-3W-WF	3.5	60° Wide Flood	270	2700K	50,000	25 Watt
L-ED16-5W-SP	5	15° Spot	350	2700K	50,000	40 Watt
L-ED16-5W-FL	5	45° Flood	350	2700K	50,000	40 Watt
L-ED16-5W-WF	5	60° Wide Flood	350	2700K	50,000	40 Watt
L-ED16-COB5W-SP	5	15° Spot	450/470	2700K/3000K	50,000	50 Watt
L-ED16-COB5W-FL	5	38° Flood	450/470	2700K/3000K	50,000	50 Watt
L-ED16-COB5W-WF	5	60° Wide Flood	450/470	2700K/3000K	50,000	50 Watt
L-ED16-6W-SP	6	15° Spot	600	2700K/3000K	50,000	75 Watt
L-ED16-6W-FL	6	38° Flood	600	2700K/3000K	50,000	75 Watt
L-ED16-6W-WF	6	60° Wide Flood	600	2700K/3000K	50,000	75 Watt

■ Single color MR-16 LED available in AMBER, BLUE, GREEN, PURPLE, RED and VIOLET

JOB INFORMATION

TYPE: DATE:

JOB NAME & ADDRESS:

PRODUCT #:

TOTAL QUANTITY:

LAMP TYPE & WATTAGE:

TRANSFORMER:

CONTRACTOR:

SPECIFIER:

• When ordering LED lamp with a fixture your part number should follow the format below:

• CL - product # - lamp - wattage - lamp angle

CL - 523-BK - L-ED16 - 5W - FL

Example: CL-523-BK-L-ED16-5W-FL

• Corona Lighting reserves the right to make any change and/or improvement to the design and construction of this fixture without further notification.

ACCESSORIES SHEET

PRODUCT # : CL-523-BK

•Directional Lights

•Machined Aluminum

Mounting Risers

- CX-671 6" Aluminum Riser, ½ NPT Male/Female
Finishes: **BK**- Black, **BZ**- Bronze
- CX-672 12" Aluminum Riser, ½ NPT Male/Female
Finishes: **BK**- Black, **BZ**- Bronze
- CX-673 18" Aluminum Riser, ½ NPT Male/Female
Finishes: **BK**- Black, **BZ**- Bronze



CX-671-BK 6"



CX-672-BK 12"



CX-673-BK 18"

Mounting Posts For Sign Light & Path Light Applications

- CX-678 24" Aluminum Single Head Post, **BK**-Black, **BZ**-Bronze
- CX-679 24" Aluminum Double Head Post, **BK**-Black, **BZ**-Bronze
- CX-690 18" Aluminum Single Head Post, **BK**-Black, **BZ**-Bronze
- CX-693 18" Aluminum Double Head Post, **BK**-Black, **BZ**-Bronze



CX-678-BK 24"



CX-679-BK 24"



CX-690-BK 18"



CX-693-BK 18"

• CX-718 (Mounting Canopies pg 2) is required for sign light installation.

Mounting Canopies

- CX-701-BK Aluminum Mini 3 Hole Round Canopy, ½ NPT, **Black**
- CX-702-BK Aluminum Rectangular Canopy, ½ NPT, **Black**
- CX-709 Aluminum Raised Canopy, ½" NPT.
Finishes: **BK**- Black, **BZ**- Bronze
- CX-718 5" Aluminum Canopy, 3-Hole ½" NPT.
Finishes: **BK**- Black, **BZ**- Bronze
- CX-721 Aluminum Tree mount Canopy with 15" Rubber Strap
stretches to 22"
Finishes: **BK**- Black, **BZ**- Bronze
- CX-722 Aluminum Tree mount Canopy with 22" Rubber Strap
stretches to 33"
Finishes: **BK**- Black, **BZ**- Bronze
- CX-723 Aluminum Tree mount Canopy with 31" Rubber Strap
stretches to 45"
Finishes: **BK**- Black, **BZ**- Bronze



CX-718-BK

CX-722-BK

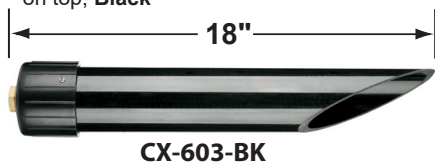
CX-709-BK

PRODUCT # : CL-523-BK

•Directional Lights

•Machined Aluminum

Mounting Pedestals

CX-603-BK 3" PVC Mounting Pedestal, ½" NPT Female Brass Hub on top, **Black**


Ground Spikes

CX-644-BK 8½" x ½" Slotted Plastic Spike, **Black** (Included with fixture)

CX-646-BR 8" ABS Spike, ½" NPT, **Natural Brass**

CX-647-BK 10.5" Heavy Duty ABS Spike, ½" NPT, **Black**

Special Lenses & Honeycomb Louvers

CX-238 MR-16 Snap-on holder, **Silver Plated**

CX-239 MR-16 honeycomb louver, **Black**

CX-240-AM MR-16 color lens, **Amber**

CX-240-BL MR-16 color lens, **Blue**

CX-240-GR MR-16 color lens, **Green**

CX-240-RD MR-16 color lens, **Red**

CX-240-YL MR-16 color lens, **Yellow**

CX-241 MR-16 lens, **Linear Spread**

CX-242 MR-16 lens, **Frosted**

CX-243 MR-16 lens, **Prismatic**

For MR-16 Lenses and Louvers, you will need the CX-238



Transformers

T-LTF60	60W, 12V, Compact Mini Transformer
T-LT75	75W, 12 and 15V, Single Circuit Transformer w/ Integrated Mechanical Timer.
T-LT150	150W, 12-15V, Single Circuit Transformer.
T-LT300	300W, 12-15V, Single Circuit Transformer.
T-LT600	600W, 12-15V, Dual Circuit Transformer.
T-LT900	900W, 12-22V, Triple Circuit Transformer.
T-FIDT	Field Installed Plug-in Digital Timer.
T-FIT	Field Installed Plug-in Mechanical Timer.
T-TR-FIP	Field Installed Plug-in Photocell



T-LT75

T-LT150



Dimmers

CX-DIM-100 100W, Low Voltage Dimmer Switch.
Use with T-LT Series Transformers, **Black**

CX-DIM-100

